



Founded in 1890

# The British Astronomical Association

A company limited by guarantee

Registered Charity No. 210769

Burlington House, Piccadilly, London, W1J 0DU

Telephone: 020 7734 4145

Fax No.: 020 7439 4629

Email: office@britastro.org

Website: www.britastro.org

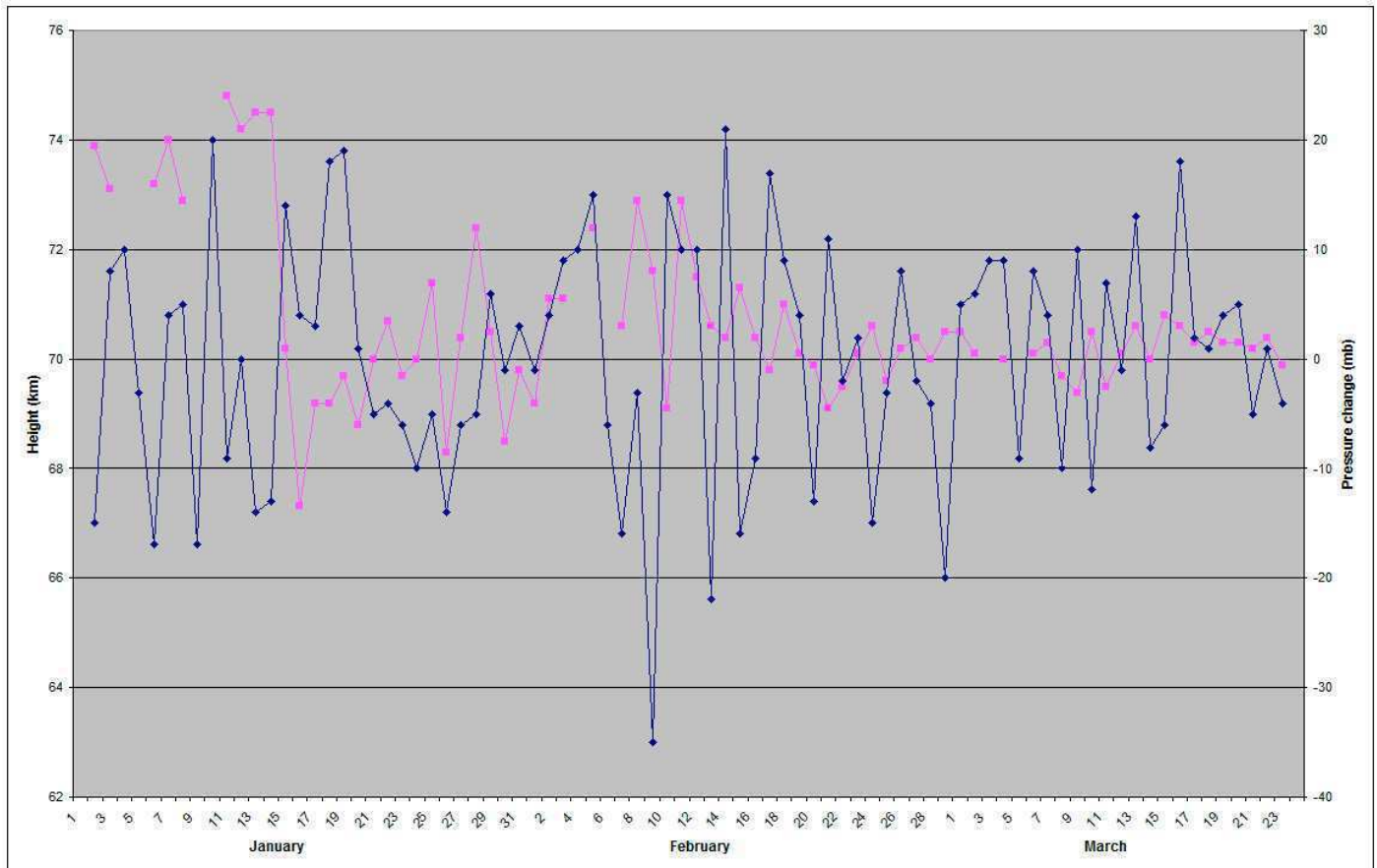


Please send all reports and observations to [jacook@jacook.plus.com](mailto:jacook@jacook.plus.com)

## BAA Radio Astronomy Section.

## 2020 MARCH.

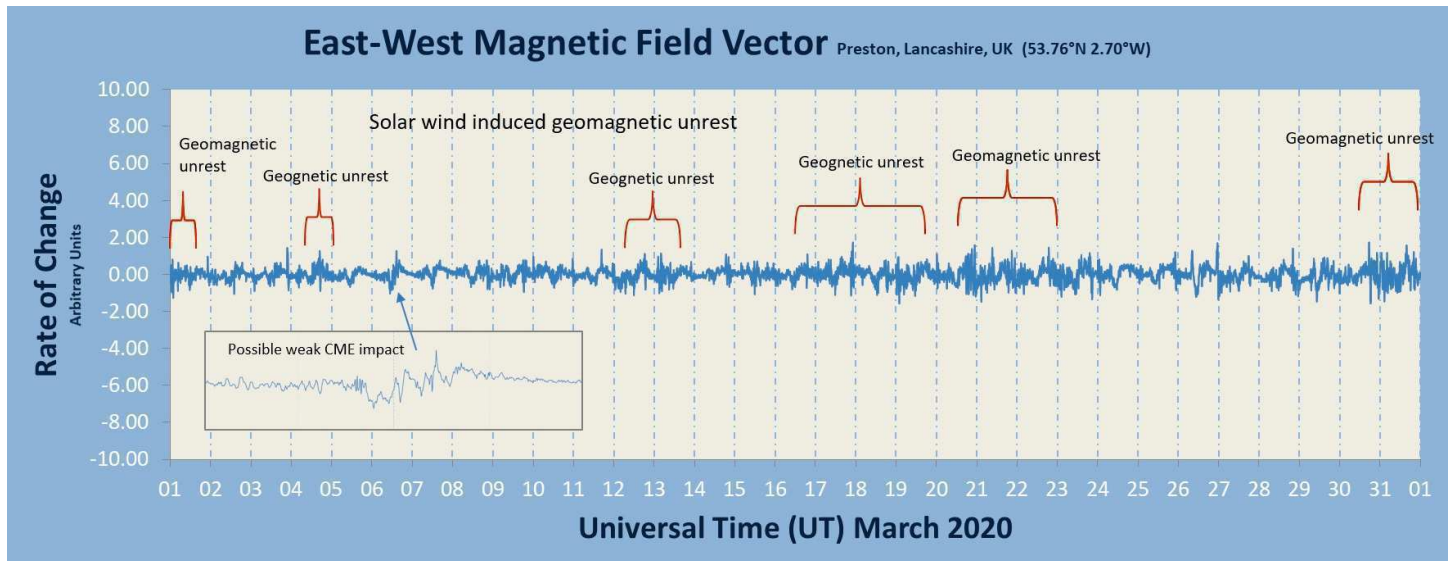
March was another month of very low solar activity, with just a few small flares reported in the satellite data. The most energetic event was a B2.3 flare on March the 11<sup>th</sup>. We did not record any SIDs. On March 16<sup>th</sup> the 23.4kHz went off-air, remaining off for the rest of the month. There have also been disruptions to the GOES X-ray charts on the NOAA website, although a new source has been found at [www.polarlicht-vorhersage.de/goes-archive](http://www.polarlicht-vorhersage.de/goes-archive).



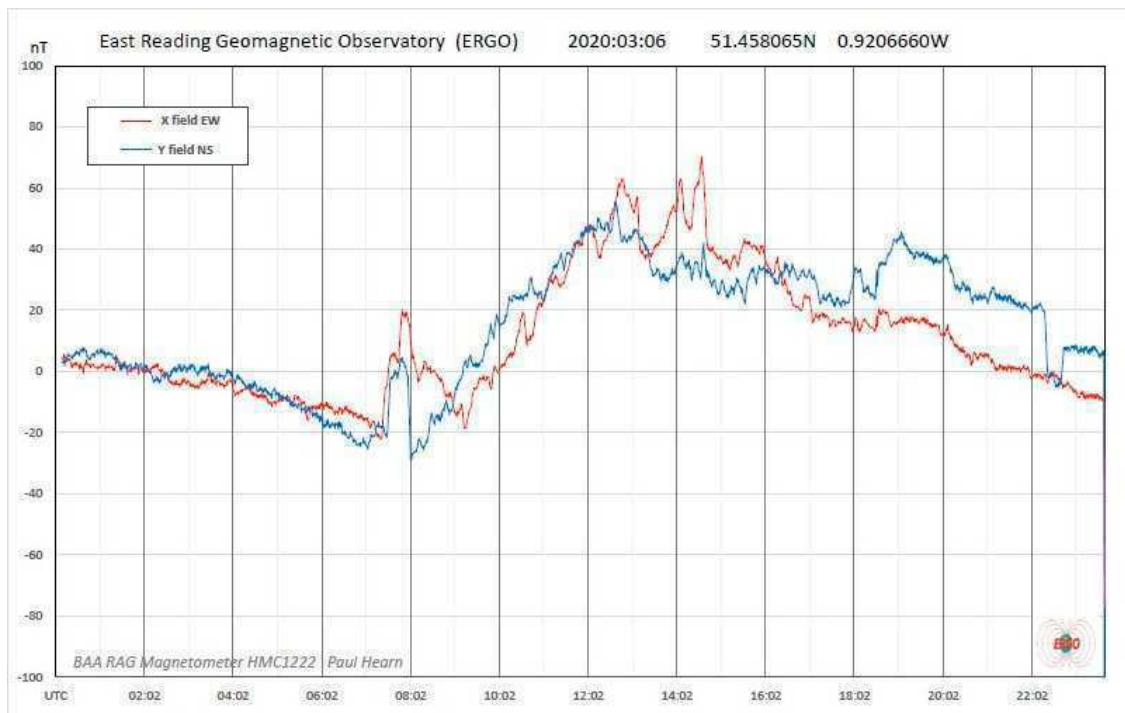
Following on from last month, Mark Edwards has continued to chart the D-region height against weather patterns. This chart shows the modelled D-region height with the daily pressure change measured at Manchester. There are periods when there seems to be some correlation, and periods when there is none, so no conclusions yet.

Colin Clements was able to resume VHF monitoring at 151MHz and 408MHz, but nothing of note was recorded.

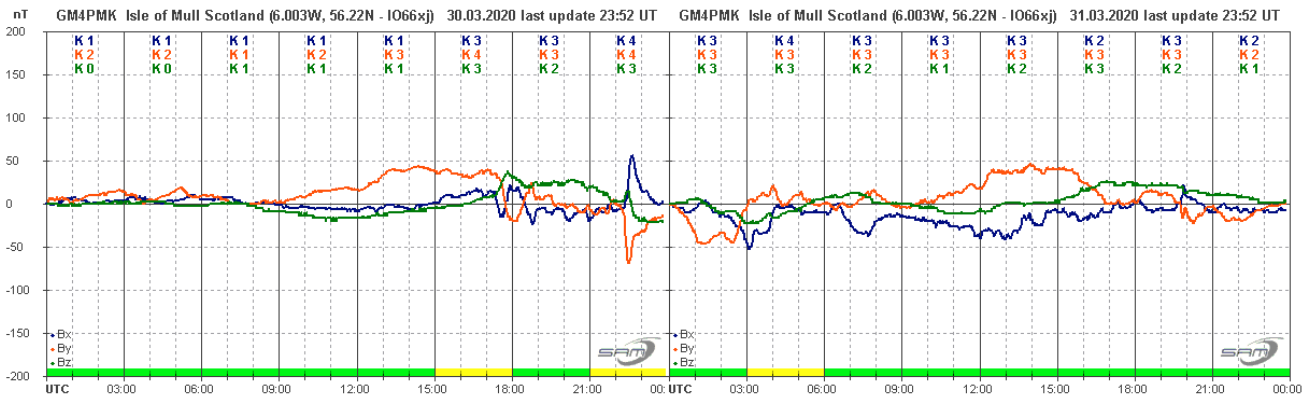
## MAGNETIC OBSERVATIONS.



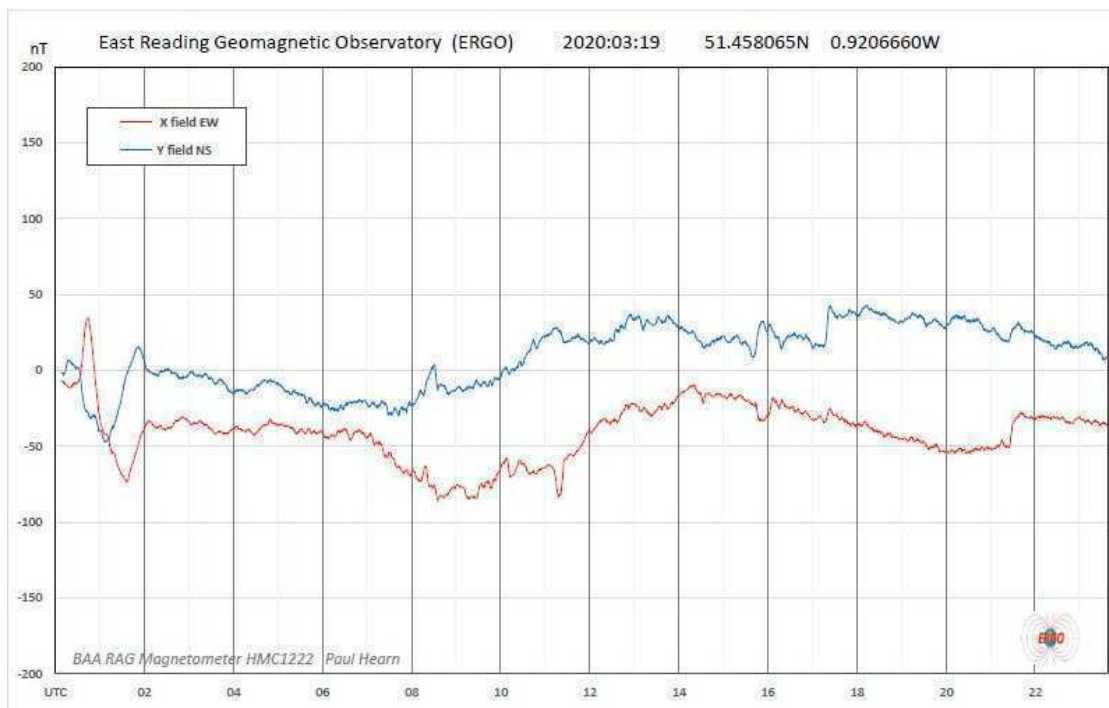
Stuart Green has provided a chart of the entire month's activity, plotted as the rate of change of magnetic flux. With minimal solar activity, most of the magnetic activity was from changes in solar wind speed, made even more effective by the ideal alignment of the Earth's magnetic field for solar wind access at this time of year. Stuart highlights a possible weak CME arrival on the 6<sup>th</sup>. The STEREO satellite detected weak CMEs on February 28<sup>th</sup> and March 2<sup>nd</sup>, either of which could be responsible for the disturbance.



This chart by Paul Hearn shows his dual-axis recording for the 6<sup>th</sup>. The pulse between 07 and 08UT appears to be local interference as it does not show on recordings from different locations, but the disturbance from 12UT onwards does show genuine magnetic activity. The source of the CME is not clear, but it was very slow moving judging by the STEREO data.



As already noted, the remainder of the activity was from coronal hole wind streams. This recording (above) by Roger Blackwell shows probably the strongest disturbance of the month, over the 30<sup>th</sup> and 31<sup>st</sup>.

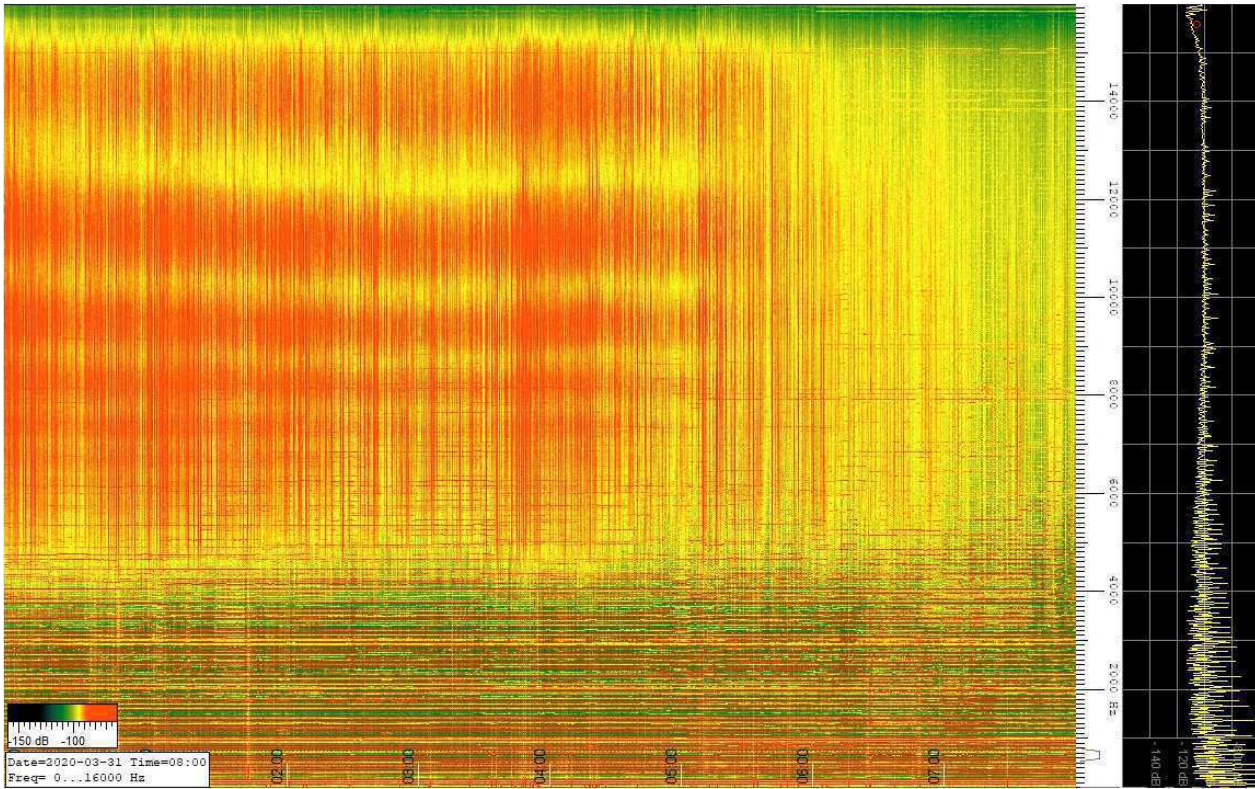


This recording by Paul Hearn shows a weaker disturbance on the 19<sup>th</sup>, from the second appearance of a coronal hole last seen in mid February. The low level of activity faded out over the next two days.

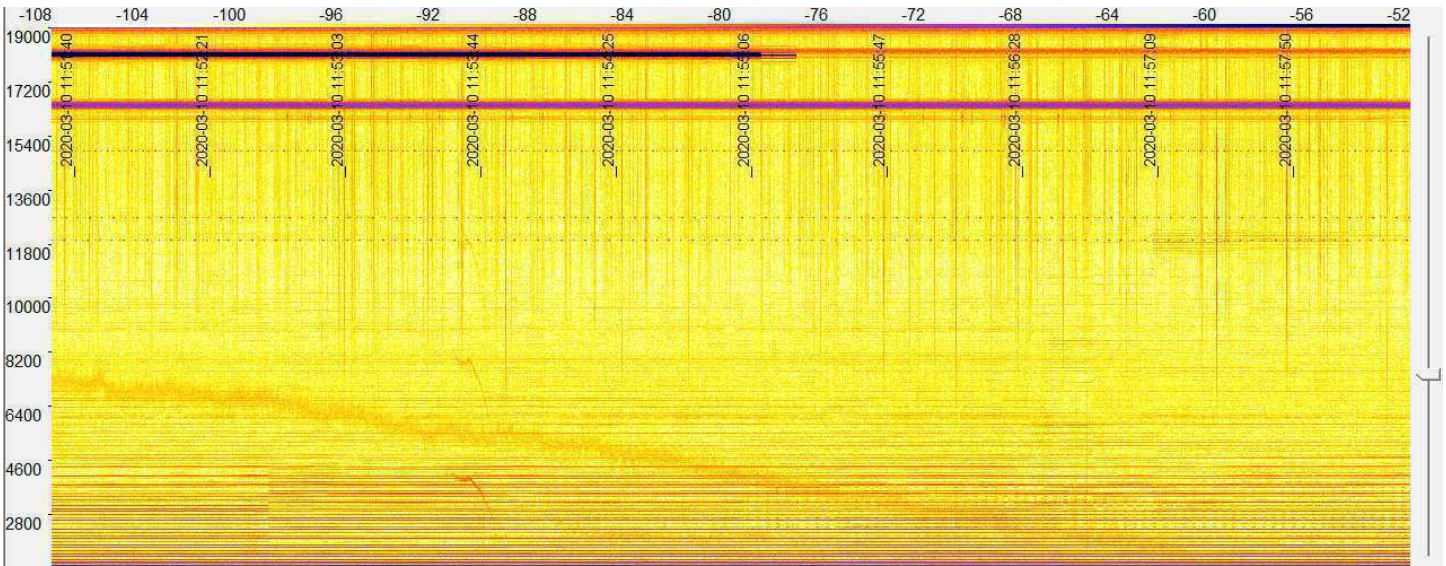
Magnetic observations received from Roger Blackwell, Colin Clements, Stuart Green, Paul Hearn and John Cook.

## ATMOSPHERICS.

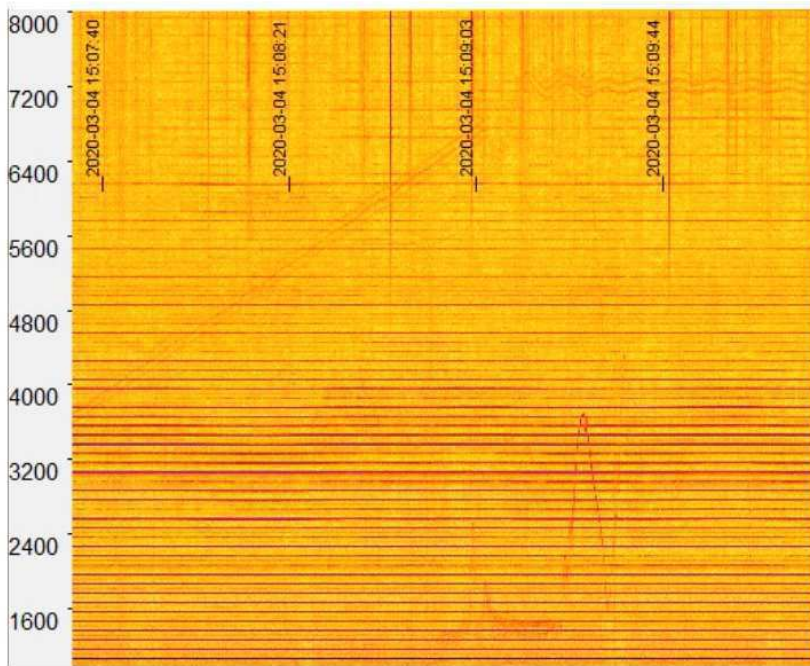
Colin Briden has made further observations of atmospherics during March. He has asked if anyone else within the radio astronomy section might be interested in making these observations from different locations, the idea being to see whether there is any correlation with the season, weather patterns, etc. He is recommending the use of Spectra Vue software as better for this type of work, and can supply a suitable configuration file. Please get in touch by email if you are interested.



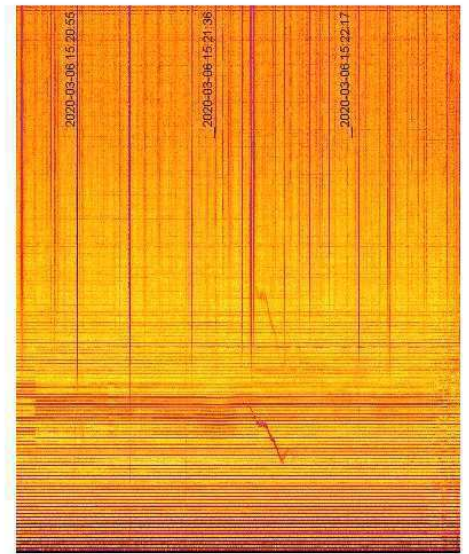
This recording shows the spectrum from 2kHz to 15kHz (vertical axis) over the period from 00 to 08UT on the 31<sup>st</sup>. The noise signals can be seen to fade out as dawn approaches at 06UT. Samples were taken at 30s intervals.



This recording covers the spectrum from 2.8kHz to 19kHz, from 11:50 to 11:58 on the 10<sup>th</sup>. There is a weak signal slowly decreasing in frequency over this period, along with a brief hook-signal and its second harmonic at 11:53. Two of the usual VLF signals are also visible at the top of the picture. Also visible are three narrow signals that appear to be rows of short dots between 11.9 and 14.9kHz. Colin is wondering whether they might be related to the old Alpha radar system in use some years ago.



March 4<sup>th</sup> 15:09UT



March 6<sup>th</sup> 15:22UT

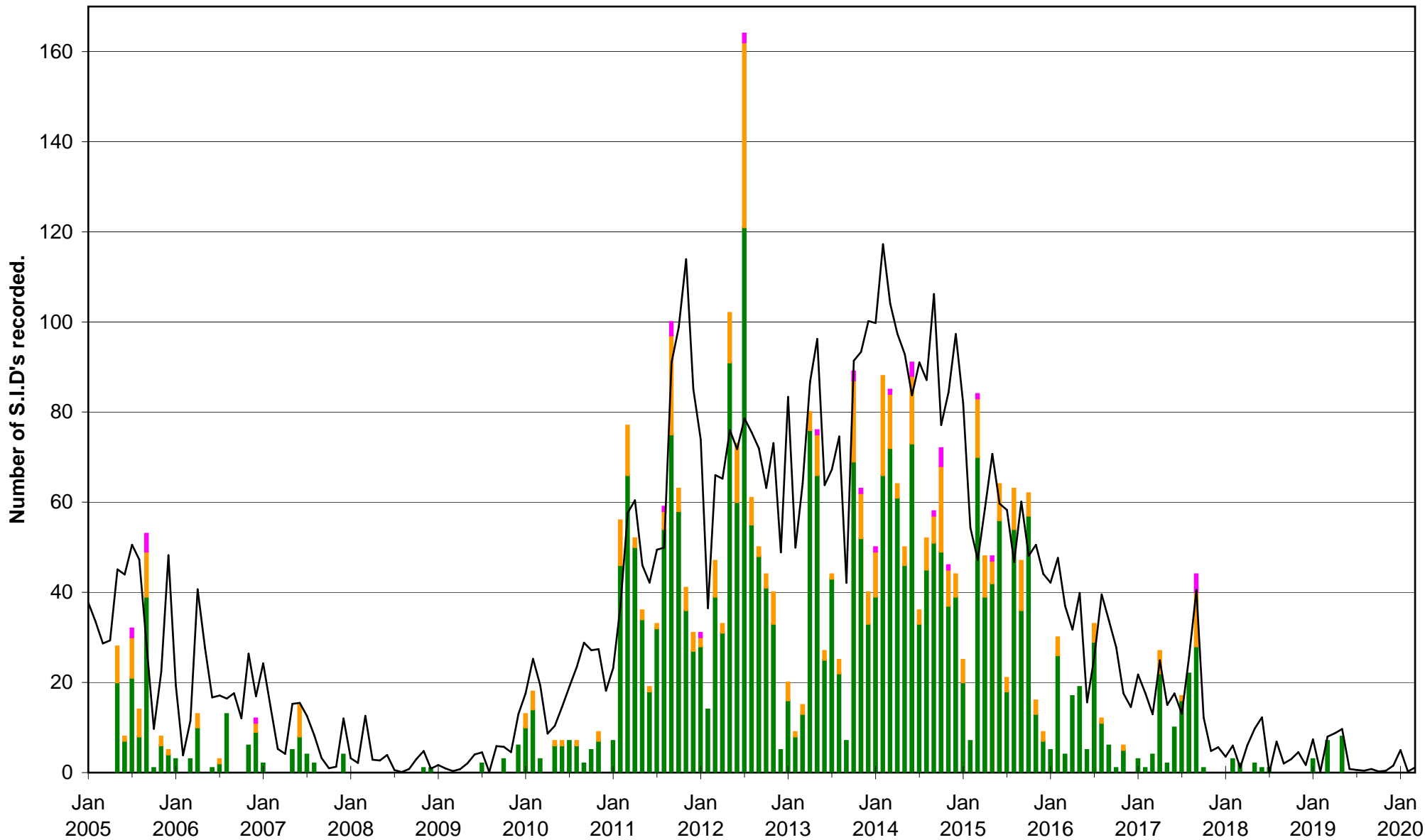
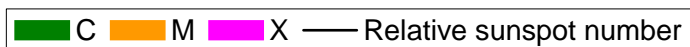
These are two of the sample signals recorded during March. The first shows a steadily rising tone from about 4kHz to 7.2kHz, which then gently oscillates towards the end of the recording. Below this is an unusual rapidly rising / falling tone that fades out into the background. The second shows another rising / falling tone along with its second harmonic clearly visible. There are also plenty of 'spherics' visible in both recordings, appearing as vertical lines from the top of each picture. The horizontal lines appear to be 100Hz harmonics.

The book "Radio Nature" by Renato Romero covers many aspects of natural radio reception, along with recording methods and possible problems. This is still available from the UKRAA, and is well worth reading if the subject is of interest.

I do hope that everyone is keeping well and avoiding this virus that is causing us so many problems. My thoughts of a section meeting sometime this year have been abandoned for now. BAA meetings have also been cancelled or postponed, but there is a series of weekly 'webinars', details of which can be found at [www.britastro.org](http://www.britastro.org).



### VLF flare activity 2005/20



**BARTELS DIAGRAM**

ROTATION	KEY:	DISTURBED.	ACTIVE	SFE	B, C, M, X = FLARE MAGNITUDE.	Synodic rotation start (carrington's).
2516	F	9 10 11 12 13 14 15 16 17 18	19 20 21 22 23 24 25 26	27 28 29 30 31	2200	2018 February 1 2 3 4
2517	F	5 6 7 8 9 10 11 12 13 14	15 16 17 18 19 20 21 22 23 24 25 26 27 28	29 30 31	2201	2018 March 1 2 3
2518	F	4 5 6 7 8 9 10 11 12 13	14 15 16 17 18 19 20 21 22	23 24 25 26 27 28 29 30	2202	
2519	F	2018 April 31 1 2 3 4 5 6 7 8	9 10 11 12 13 14 15 16 17 18	19 20 21 22 23 24 25 26	2203	
2520	F	2018 May 27 28 29 30 1 2 3 4 5 6 7 8 9 10 11 12 13 14 15 16 17 18 19 20 21 22 23		24 25 26 27 28 29 30 31	2204	
2521	F	24 25 26 27 28 29 30 31	2018 June 1 2 3 4 5 6 7 8 9 10 11 12	13 14 15 16 17 18 19	2205	
2522	F	20 21 22 23 24 25 26 27 28 29 30	2018 July 1 2 3 4 5 6 7 8 9	10 11 12 13 14 15 16	2206	
2523	F	17 18 19 20 21 22 23 24 25 26 27 28 29 30 31	2018 August 1 2 3 4 5	6 7 8 9 10 11 12	2207	
2524	F	13 14 15 16 17 18 19 20 21 22 23 24 25 26 27 28 29 30 31	2018 September 1 2 3 4 5 6 7 8		2208	2018 October 1 2 3 4 5
2525	F	9 10 11 12 13 14 15 16 17 18 19 20 21 22 23 24 25 26 27 28 29 30 31		2018 October 1 2 3 4 5	2209	
2526	F	6 7 8 9 10 11 12 13 14 15 16 17 18 19 20 21 22 23 24 25 26 27 28 29 30 31		2018 November 1	2210	
2527	F	2018 November 2 3 4 5 6 7 8 9 10 11 12 13 14 15 16 17 18 19 20 21 22		2018 December 23 24 25 26 27 28	2211	
2528	F	29 30 2018 December 1 2 3 4 5 6 7 8 9 10 11 12 13 14 15 16 17 18 19		2018 December 20 21 22 23 24 25	2212	
2529	F	26 27 28 29 30 31 2019 January 1 2 3 4 5 6 7 8 9 10 11 12 13 14 15 16 17 18 19 20 21		2019 January 17 18 19 20 21	2213	
2530	F	22 23 24 25 26 27 28 29 30 31 2019 February 1 2 3 4 5 6 7 8 9 10 11 12 13 14 15 16 17		2019 February 13 14 15 16 17	2214	
2531	F	18 19 20 21 22 23 24 25 26 27 28 2019 March 1 2 3 4 5 6 7 8 9 10 11 12		2019 March 13 14 15 16	2215	
2532	F	17 18 19 20 21 22 23 24 25 26 27 28 29 30 31 2019 April 1 2 3 4 5 6 7 8 9 10 11 12		2019 April 9 10 11 12	2216	
2533	F	13 14 15 16 17 18 19 20 21 22 23 24 25 26 27 28 29 30 2019 May 1 2 3 4 5 6 7 8 9		2019 May 6 7 8 9	2217	
2534	F	10 11 12 13 14 15 16 17 18 19 20 21 22 23 24 25 26 27 28 29 30 31 2019 June 1 2 3 4 5		2019 June 3 4 5	2218	
2535	F	6 7 8 9 10 11 12 13 14 15 16 17 18 19 20 21 22 23 24 25 26 27 28 29 2019 July 30 1 2		2019 July 1 2	2219	
2536	F	3 4 5 6 7 8 9 10 11 12 13 14 15 16 17 18 19 20 21 22 23 24 25 26 2019 July 27 28 29		2019 July 27 28 29	2220	
2537	F	30 31 2019 August 1 2 3 4 5 6 7 8 9 10 11 12 13 14 15 16 17 18 19 20 21 22		2019 August 23 24 25	2221	
2538	F	26 27 28 29 30 31 2019 September 1 2 3 4 5 6 7 8 9 10 11 12 13 14 15 16 17 18		2019 September 19 20 21	2222	
2539	F	22 23 24 25 26 27 28 29 30 2019 October 1 2 3 4 5 6 7 8 9 10 11 12 13 14 15 16		2019 October 17 18	2223	
2540	F	19 20 21 22 23 24 25 26 27 28 29 30 31 2019 November 1 2 3 4 5 6 7 8 9 10 11 12		2019 November 13 14	2224	
2541	F	15 16 17 18 19 20 21 22 23 24 25 26 27 28 29 30 2019 December 1 2 3 4 5 6 7 8 9		2019 December 10 11	2225	
2542	F	12 13 14 15 16 17 18 19 20 21 22 23 24 25 26 27 28 29 30 31 2020 January 1 2 3 4 5 6 7		2020 January 6 7	2226	
2543	F	8 9 10 11 12 13 14 15 16 17 18 19 20 21 22 23 24 25 26 27 28 29 30 31 2020 February 1 2 3		2020 February 1 2 3	2227	
2544	F	4 5 6 7 8 9 10 11 12 13 14 15 16 17 18 19 20 21 22 23 24 25 26 27 28 29		2020 February 28 29	2228	
2545	F	2020 March 2 3 4 5 6 7 8 9 10 11 12 13 14 15 16 17 18 19 20 21 22 23 24 25 26 27 28		2020 March 28 29	2229	
2546	F	29 30 31 2020 April 1 2 3 4 5 6 7 8 9 10 11 12 13 14 15 16 17 18 19 20 21 22 23 24		2020 April 1 2 3 4 5 6 7 8 9 10 11 12 13 14 15 16 17 18 19 20 21 22 23 24		