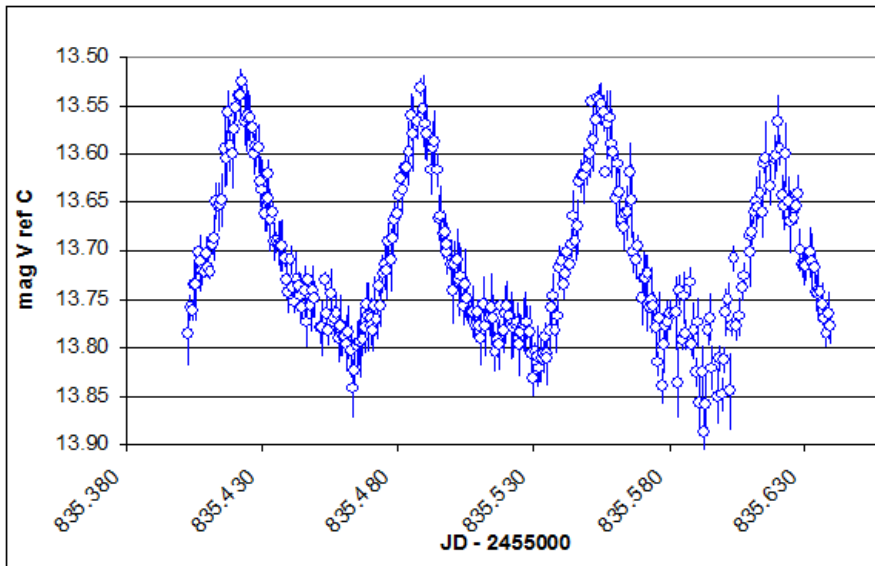
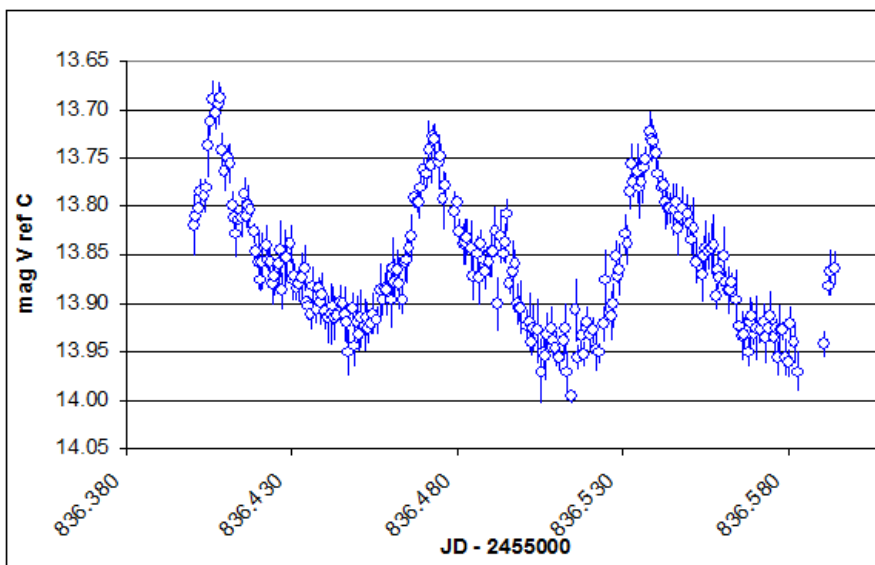


## Recent CCD V Observations by Roger Pickard

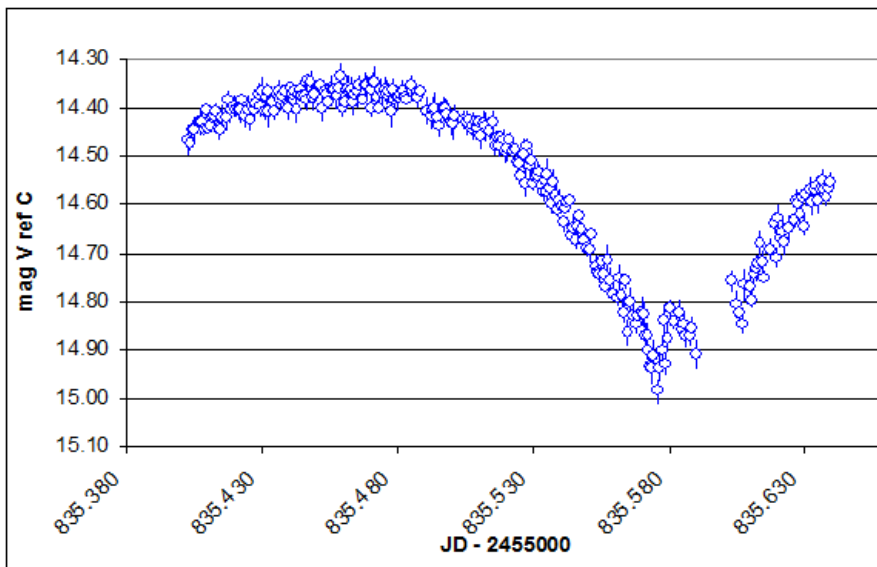


**1RXS J231935.0+364705      2011 Sep 30**

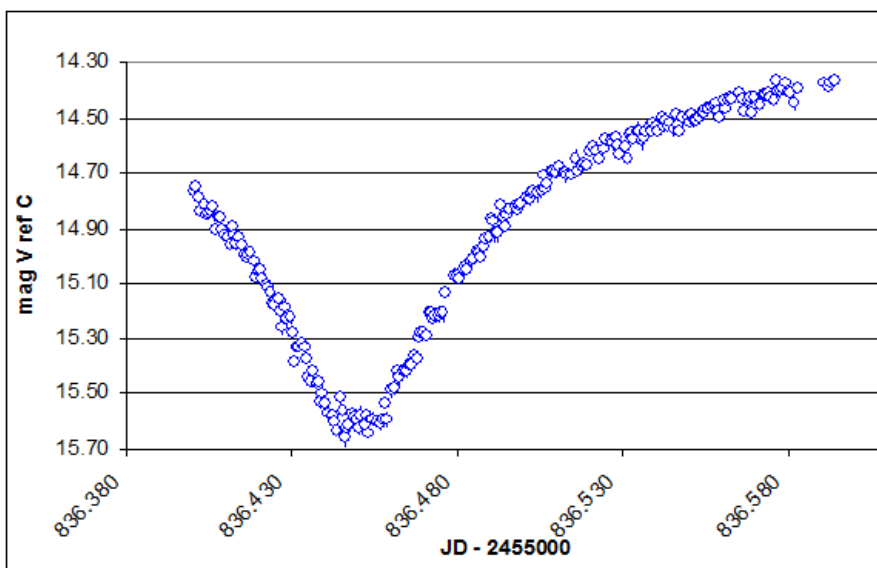


**1RXS J231935.0+364705      2011 Oct 01**

In the same field of view is the eclipsing binary GSC 02764 01639



GSC 02764 01639 Secondary minimum observed by chance when I tried to use it as a comparison star!



GSC 02764 01639 Primary minimum. It is an eclipsing binary of the beta Lyrae type with a period of 0.5774 days.

1RXS J231935.0+364705

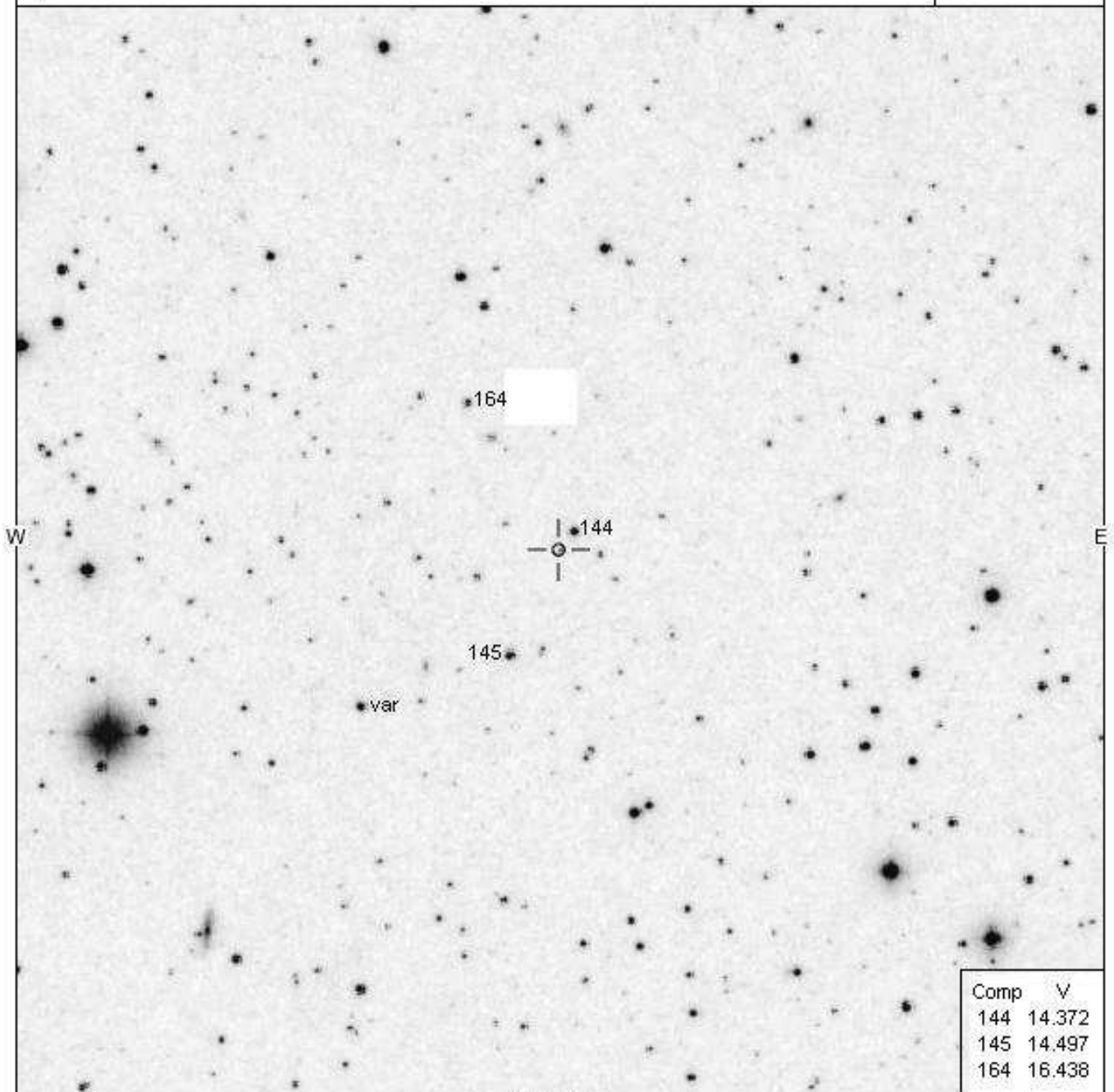
S

AAVSO  
Chart

Magn: 14.5 - 19.0 CR  
Period:  
Type: UG  
Spec:

1RXS J231935.0+364705

(2000) 23:19:36.06 +36:47:0.3



BAAVSS P111003

FOV = 15.0'

Sequence derived from CMC14 data

<http://www.aavso.org/vsp/>

Copyright © 2011 AAVSO

N