


Occultation of the open cluster Hyades by the Moon

Vaclav Priban

Observatory and planetarium Prague

IOTA/ES

I am personally the exact observer who waits for interesting observation and interesting results. I was encouraged by organiser's e-mail from the 16th of July and decided to tell something about my private astronomical activity. I usually observe at Dablice observatory in Prague. This observatory is part of municipal company Observatory and planetarium Prague.



WIKIPEDIA
The Free Encyclopedia

[Main page](#)
[Contents](#)
[Featured content](#)
[Current events](#)
[Random article](#)
[Donate to Wikipedia](#)
[Wikipedia store](#)

Interaction

- [Help](#)
- [About Wikipedia](#)
- [Community portal](#)
- [Recent changes](#)
- [Contact page](#)

Tools

[Not logged in](#) [Talk](#) [Contributions](#) [Create account](#) [Log in](#)

[Article](#) [Talk](#) [Read](#) [Edit](#) [View history](#)

Ďáblice

From Wikipedia, the free encyclopedia

Ďáblice is a municipal district (*městská část*) and **cadastral** area (*katastrální území*) in **Prague**. It is located in the northern part of the city. As of 2008, there were 3,048 inhabitants living in Ďáblice.


The first written record of Ďáblice is from the 13th century. The village became part of Prague in 1968.

External links

- [Praha-Ďáblice - Official homepage](#)

Coordinates:  50°8′55″N 14°29′10″E

Ďáblice (Ďáblice)
Municipal District of Prague
Cadastral Area of Prague



Observatory in Ďáblice

My first private telescope which I have made was Newton 16 cm diameter, f. l. 86 cm. I brushed and polished mirror myself and achieved very good quality. I use to go to a cottage near Krkonose mountains (Giant mountains, Riesengebirge).

I built up a concrete pillar on meadow to can observe there. Mounting is equatorial but simple without clock drive only with fine motion on both axes. I brought telescope out and back it was not comfortable in the night mainly in winter because there is a snow.

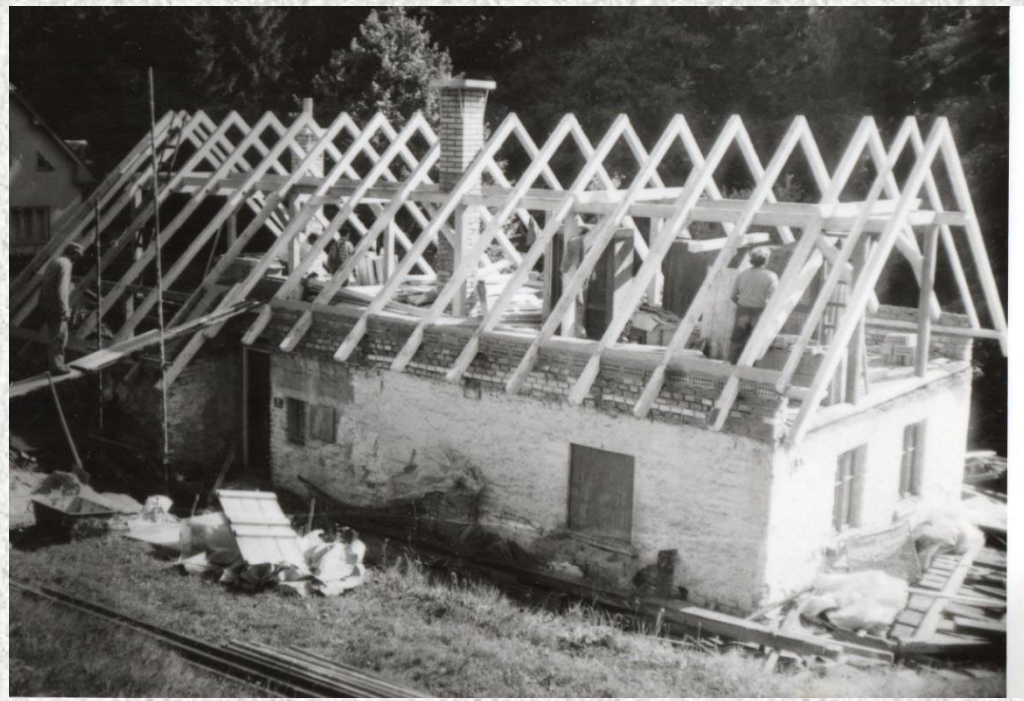






I had an idea to make observatory in attic of the cottage. The cottage is in the valley horizon is limited. Fortunately valley is orientated in south direction so sky rotates above it. Sky is very dark there is not any big town only small town Vysoke is 2 km north east. I use to go there from my childhood more than 60 years. My mother and grandfather were born there so I am the fourth generation in this cottage. Cottage is old mainly roof needed repairing.

I had completely a new roof and asked carpenters to prepare a small gable.





To make a slide roof I had to remove and cut some beams and fixed them in another way not to fall on my head !



Tripod stands by one leg on the wall others legs stand on beam which is not connected with floor.

Then I made new floor and closed observatory room with floorboards from surrounding space of attic.











Then I completed telescope.
Here is a finder 65 mm
diameter, small refractor 75 mm
diameter. Main telescope is
Cassegrain diameter 20 cm,
primary f. l. 100 cm, Cassegrain
f. l. 300 cm.

I did not make optics I have
bought it.

Secondary mirror is removable
to be possible observe in
primary focus. This composition
was used for my first occultation
observation.







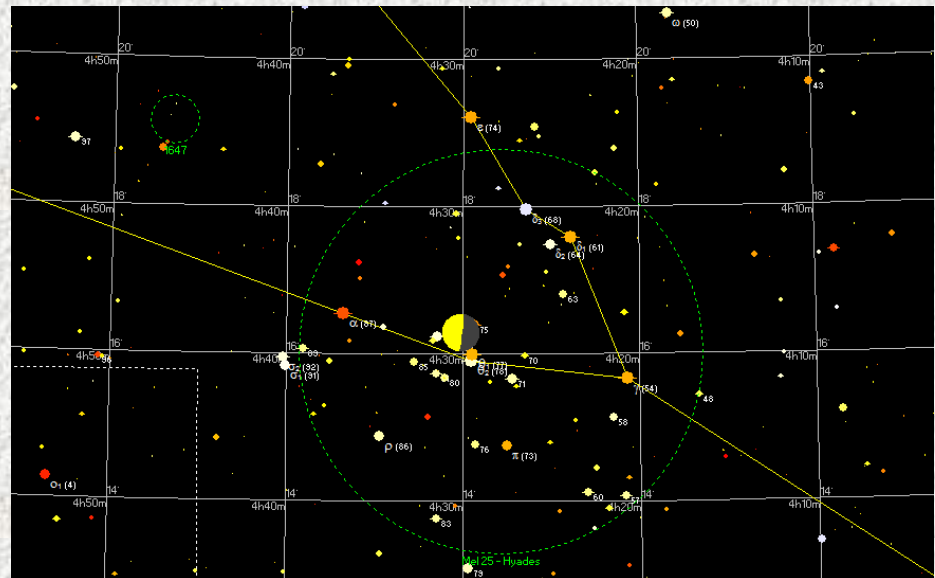
I realized it in the 5th of September last year 2015. It was occultation of Hyades by Moon. I connected all instruments and tried it in the evening. All was OK.

I went asleep because the events were reappearances. I got up after midnight, the Moon was shining so I opened the roof looked at the sky and I saw many clouds were flying across sky and Moon. But I did not give it up I waited for predicted events. I was lucky as you see in following records. [Video Removed]

Added by ESOP35:

Vaclav Priban has observed over 500 lunar occultations at Dablice Observatory since 1986.

{ data extracted from Occult 4 database }



Transportable – the 16cm in use.

