



Founded in 1890

The British Astronomical Association

A company limited by guarantee

Registered Charity No. 210769

Burlington House, Piccadilly, London, W1J 0DU

Telephone: 020 7734 4145

Fax No.: 020 7439 4629

Email: office@britastro.org

Website: www.britastro.org

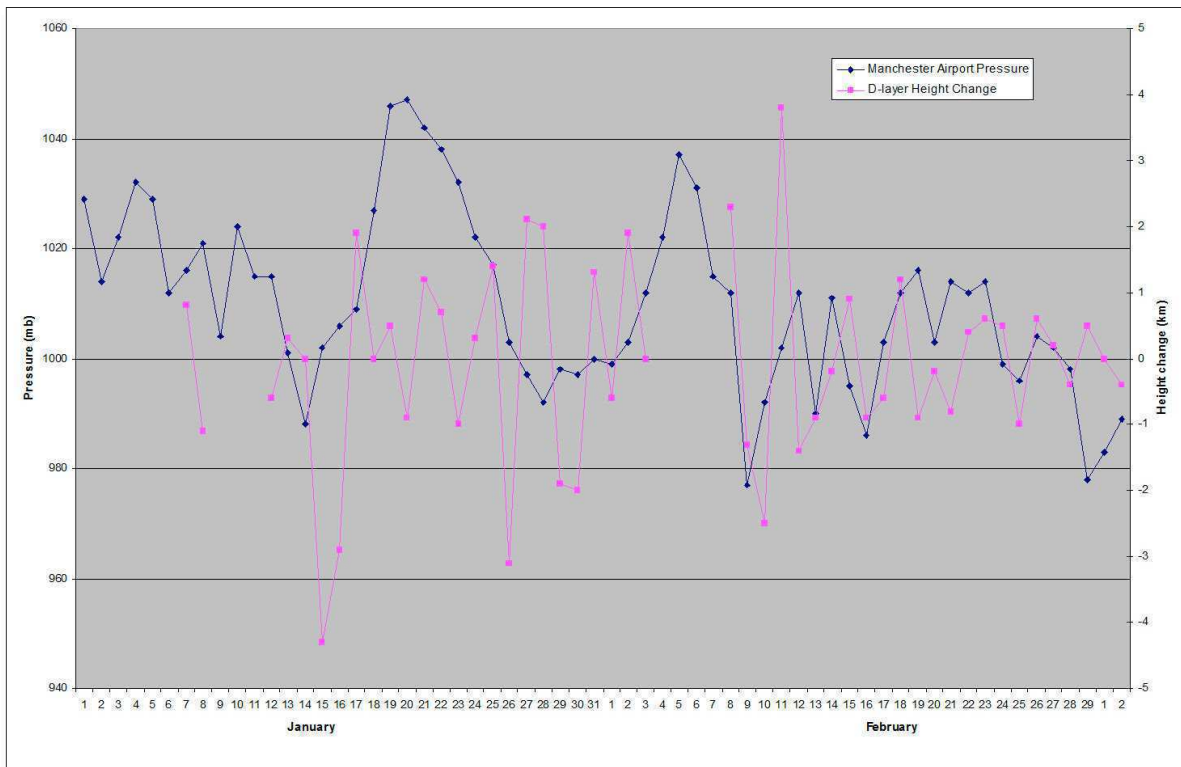


Please send all reports and observations to jacook@jacook.plus.com

BAA Radio Astronomy Section.

2020 FEBRUARY.

February was another month of solar minimum conditions, with very low X-ray flux levels shown in the GOES data. The only event of any note was an A9.6 flare at 19:03 on the 26th. We did not record any SIDs. Following the notes on atmospheric pressure and D-region height last month, Mark Edwards has provided a chart comparing the atmospheric pressure recorded at Manchester airport with his measure of the daily change in D-region height derived from the 19.6kHz and 22.1kHz signals.

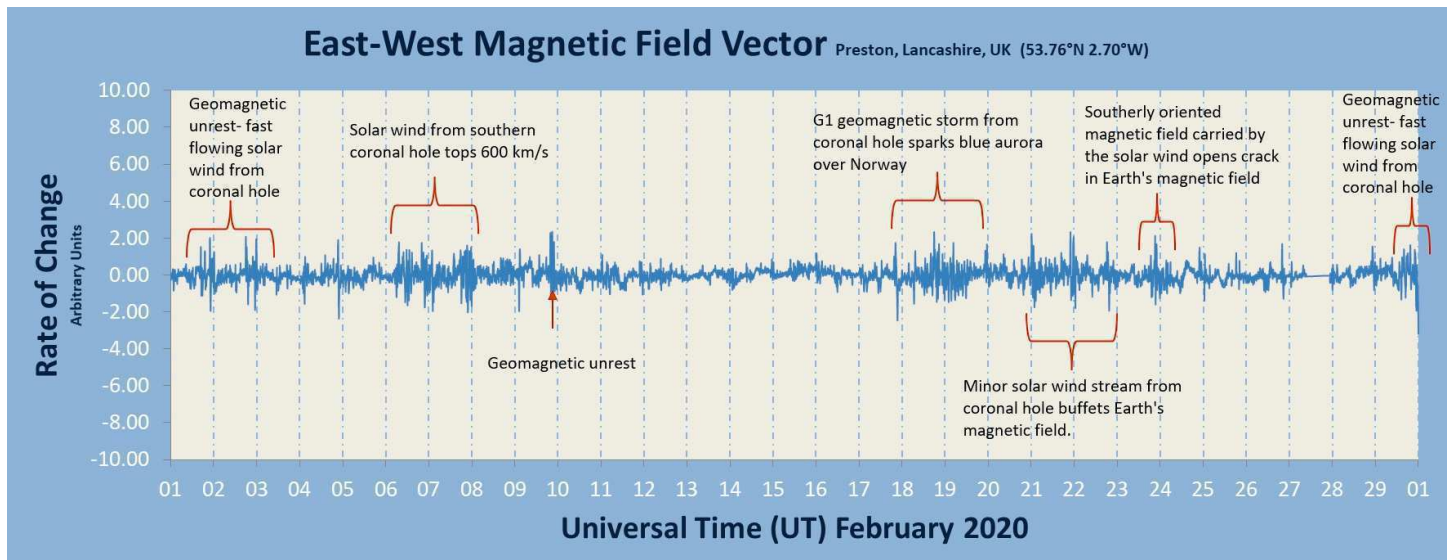


Although there are some gaps when both signals were not present, there could possibly be some correlation through February, and perhaps less so during January. While solar activity remains low, it will be interesting to see how this develops through the year.

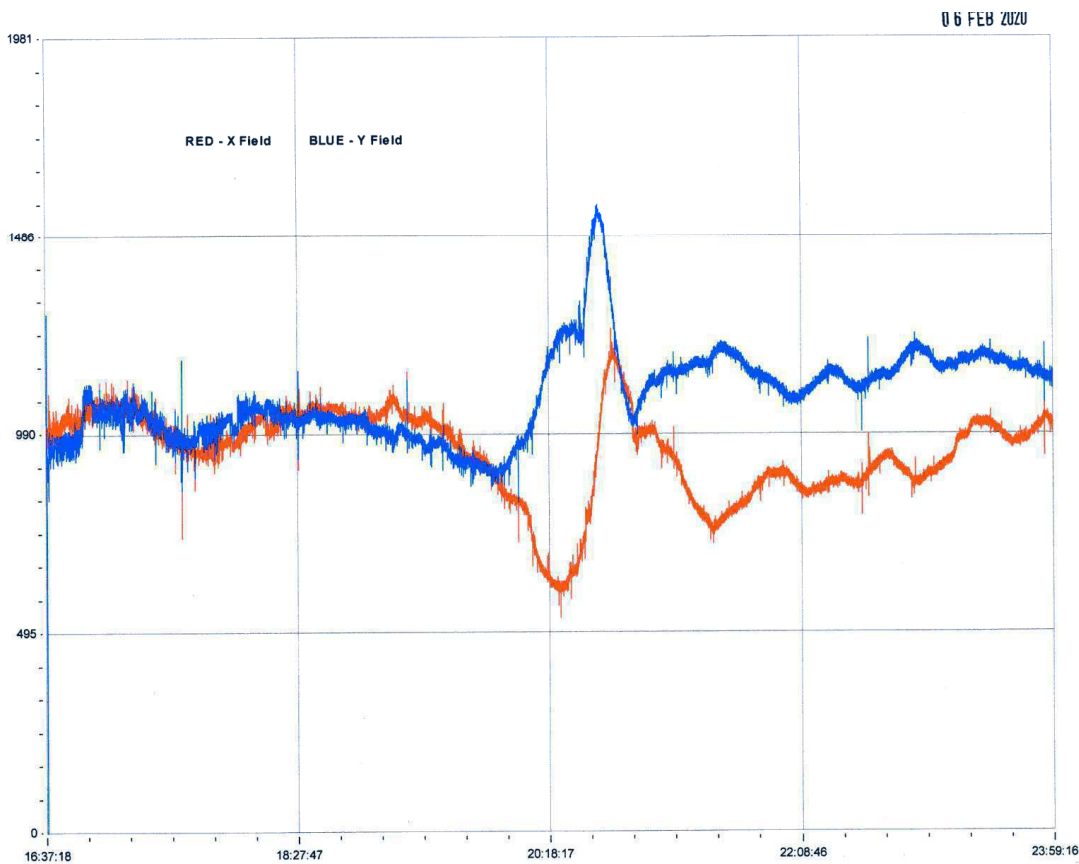
Colin Clements noted substantial noise on the 23.4kHz throughout February, declining slightly as the month progressed. The 18.3kHz signal remained much more stable over the much shorter path. Colin also noted that he should be able to restart VHF observations as the sun rises above local roof level for his aerials.

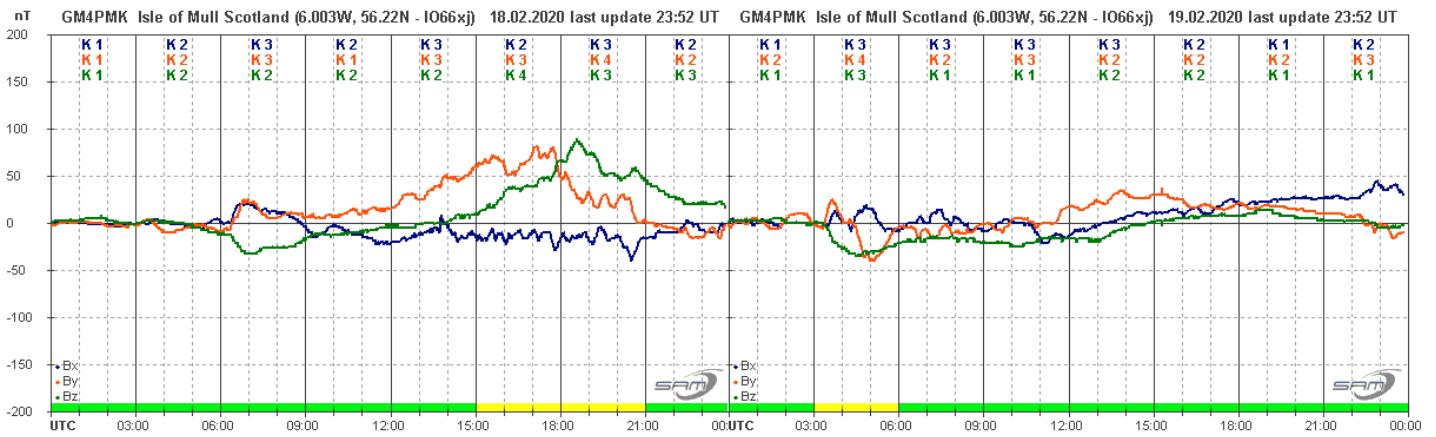
MAGNETIC OBSERVATIONS.

Stuart Green has again provided a very good summary of the month's magnetic activity:



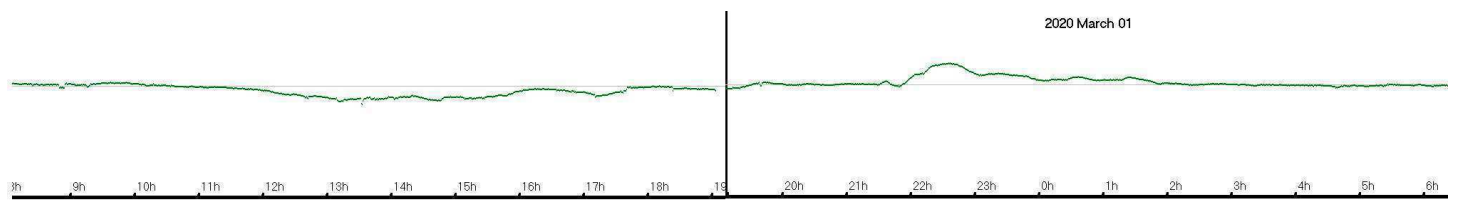
Most of this activity is from coronal holes, although satellite data reported a CME on February 18th. Its source was not given. The south-polar coronal hole produced some disturbance throughout the day on the 6th, with a short peak around 20 to 21UT as shown in the recording by Colin Clements:



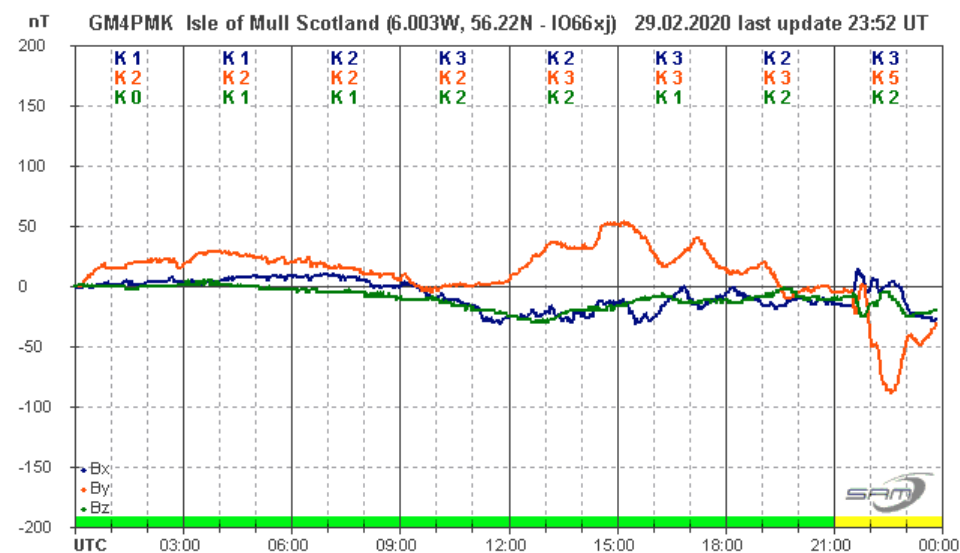


This chart from Roger Blackwell shows activity on the 18th and 19th, from further coronal holes as well as the CME recorded in satellite data. It continued over the next few days, but with much less disturbance, and faded out early on the 22nd. Stuart Green's chart shows activity over the 23rd and 24th. This seems to have been very mild, and did not show in any of the magnetometer recordings.

Activity increased again at the end of February from a coronal hole fast solar wind. This appears to be a repeat appearance of the hole seen at the beginning of the month.



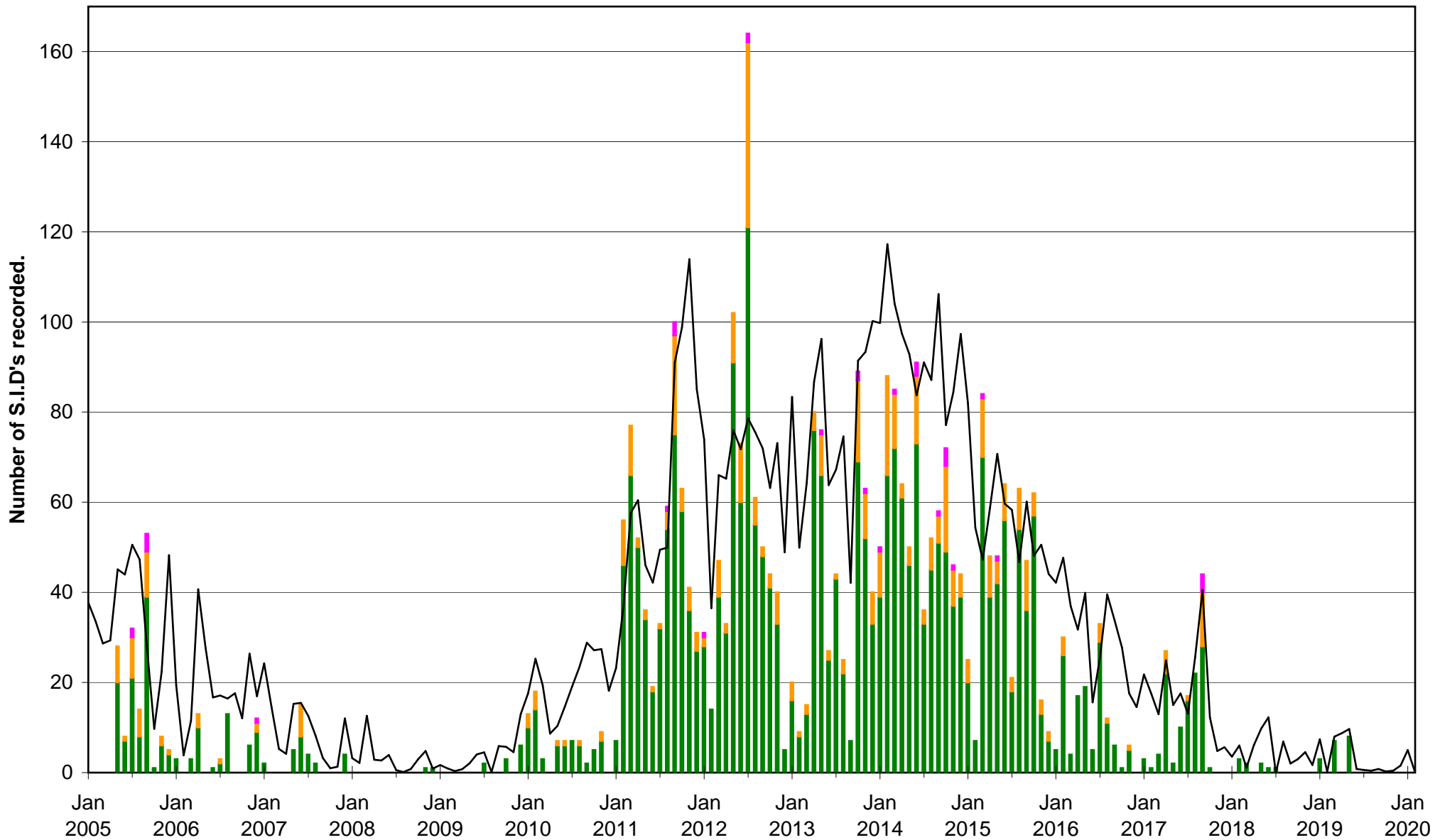
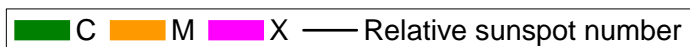
My recording shows a mild disturbance starting around 11:30UT on the 29th, and continuing until about 2AM on March 1st. The peak at 22:30 is about 60nT in my single axis magnetometer.



Roger Blackwell's 3-axis sensor shows a slightly stronger disturbance, particularly in the By trace.

Magnetic observations received from Roger Blackwell, Colin Clements, Stuart Green, Paul Hearn and John Cook

VLF flare activity 2005/20



BARTELS DIAGRAM

ROTATION	KEY:	DISTURBED.	ACTIVE	SFE	B, C, M, X = FLARE MAGNITUDE.	Synodic rotation start (carrington's).
2502	F	27	28 29 30 31	1 2 3 4 5 6 7 8 9 10	11 12 13 14 15 16 17 18 19 20 21 22	2186
2503	F	23 24 25	26 27 28 29 30 31	1 2 3 4 5 6 7	8 9 10 11 12 13 14 15 16 17 18	2187
2504	F	19 20 21 22 23 24	25 26 27 28 29 30 31	1 2 3 4 5 6 7	8 9 10 11 12 13 14 15 16 17	2188
2505	F	18 19 20	21 22 23 24 25 26	27 28 29 30 31	1 2 3 4 5 6 7 8 9 10 11 12 13	2189
2506	F	14 15 16 17	18 19 20 21 22 23 24	25 26 27 28 29 30	1 2 3 4 5 6 7 8 9 10	2190
2507	F	11 12 13 14	15 16 17 18 19 20 21 22	23 24 25 26 27 28 29 30 31	1 2 3 4 5 6	2191
2508	F	7 8 9 10	11 12 13 14 15 16 17 18 19 20 21 22	23 24 25 26 27 28 29 30	1 2 3	2192
2509	F	4 5 6 7 8	9 10 11 12 13 14 15 16 17 18 19	20 21 22 23 24 25 26 27 28 29 30		2193
2510	F	31 1 2	3 4 5 6 7 8 9 10 11 12 13 14 15	16 17 18 19 20 21 22 23 24 25 26		2194
2511	F	27 28 29 30 31	1 2 3 4 5 6 7 8 9 10 11 12	13 14 15 16 17 18 19 20 21 22		2195
2512	F	23 24 25 26	27 28 29 30 31	1 2 3 4 5 6 7 8 9		2196
2513	F	20 21 22 23	24 25 26 27 28 29 30 31	1 2 3 4 5 6 7 8 9 10 11 12 13 14 15		2197
2514	F	16 17 18 19	20 21 22 23 24 25 26 27 28 29 30	1 2 3 4 5 6 7 8 9 10 11 12		2198
2515	F	13 14 15 16	17 18 19 20 21 22 23 24 25 26 27 28 29 30	31 1 2 3 4 5 6 7 8		2199
2516	F	9 10 11 12 13	14 15 16 17 18 19 20 21 22 23 24 25 26	27 28 29 30 31 1 2 3 4		2200
2517	F	5 6 7 8 9 10 11 12 13 14	15 16 17 18 19 20 21 22 23 24 25 26 27 28	29 30 31 1 2 3		2201
2518	F	4 5 6 7 8 9 10 11 12 13	14 15 16 17 18 19 20 21 22 23 24 25 26 27 28 29 30			2202
2519	F	31 1 2 3 4 5 6 7 8 9 10 11 12 13 14 15 16 17 18	19 20 21 22 23 24 25 26			2203
2520	F	27 28 29 30 1 2 3 4 5 6 7 8 9 10 11 12 13 14 15 16 17 18 19 20 21 22 23				2204
2521	F	24 25 26 27 28 29 30 31 1 2 3 4 5 6 7 8 9 10 11 12				2205
2522	F	20 21 22 23 24 25 26 27 28 29 30 1 2 3 4 5 6 7 8 9 10 11 12 13 14 15 16				2206
2523	F	17 18 19 20 21 22 23 24 25 26 27 28 29 30 31 1 2 3 4 5				2207
2524	F	13 14 15 16 17 18 19 20 21 22 23 24 25 26 27 28 29 30 31 1 2 3 4 5 6 7 8				2208
2525	F	9 10 11 12 13 14 15 16 17 18 19 20 21 22 23 24 25 26 27 28 29 30 31 1 2 3 4 5				2209
2526	F	6 7 8 9 10 11 12 13 14 15 16 17 18 19 20 21 22 23 24 25 26 27 28 29 30 31 1				2210
2527	F	2 3 4 5 6 7 8 9 10 11 12 13 14 15 16 17 18 19 20 21 22 23 24 25 26 27 28				2211
2528	F	29 30 1 2 3 4 5 6 7 8 9 10 11 12 13 14 15 16 17 18 19 20 21 22 23 24 25				2212
2529	F	26 27 28 29 30 31 1 2 3 4 5 6 7 8 9 10 11 12 13 14 15 16 17 18 19 20 21				2213
2530	F	22 23 24 25 26 27 28 29 30 31 1 2 3 4 5 6 7 8 9 10 11 12 13 14 15 16 17				2214
2531	F	18 19 20 21 22 23 24 25 26 27 28 29 30 31 1 2 3 4 5 6 7 8 9 10 11 12 13 14 15 16				2215
2532	F	17 18 19 20 21 22 23 24 25 26 27 28 29 30 31 1 2 3 4 5 6 7 8 9 10 11 12 13				2216
2533	F	13 14 15 16 17 18 19 20 21 22 23 24 25 26 27 28 29 30 31 1 2 3 4 5 6 7 8 9				2217
2534	F	10 11 12 13 14 15 16 17 18 19 20 21 22 23 24 25 26 27 28 29 30 31 1 2 3 4 5				2218
2535	F	6 7 8 9 10 11 12 13 14 15 16 17 18 19 20 21 22 23 24 25 26 27 28 29 30 31 1 2				2219
2536	F	3 4 5 6 7 8 9 10 11 12 13 14 15 16 17 18 19 20 21 22 23 24 25 26 27 28 29				2220
2537	F	30 31 1 2 3 4 5 6 7 8 9 10 11 12 13 14 15 16 17 18 19 20 21 22 23 24 25				2221
2538	F	26 27 28 29 30 31 1 2 3 4 5 6 7 8 9 10 11 12 13 14 15 16 17 18 19 20 21				2222
2539	F	22 23 24 25 26 27 28 29 30 31 1 2 3 4 5 6 7 8 9 10 11 12 13 14 15 16 17 18				2223
2540	F	19 20 21 22 23 24 25 26 27 28 29 30 31 1 2 3 4 5 6 7 8 9 10 11 12 13 14				2224
2541	F	15 16 17 18 19 20 21 22 23 24 25 26 27 28 29 30 31 1 2 3 4 5 6 7 8 9 10 11				2225
2542	F	12 13 14 15 16 17 18 19 20 21 22 23 24 25 26 27 28 29 30 31 1 2 3 4 5 6 7				2226
2543	F	8 9 10 11 12 13 14 15 16 17 18 19 20 21 22 23 24 25 26 27 28 29 30 31 1 2 3				2227
2544	F	4 5 6 7 8 9 10 11 12 13 14 15 16 17 18 19 20 21 22 23 24 25 26 27 28 29 30 31				2228