

JunoCam at PJ39: What the pictures show

John Rogers (BAA)

Figures (small copies):

[Full-size figures are in a separate ZIP file. As always, unlabelled versions of the figures are available if needed.]

Figure 1: Composite north polar projection map (down to 60°N at edges), showing the CPCs.

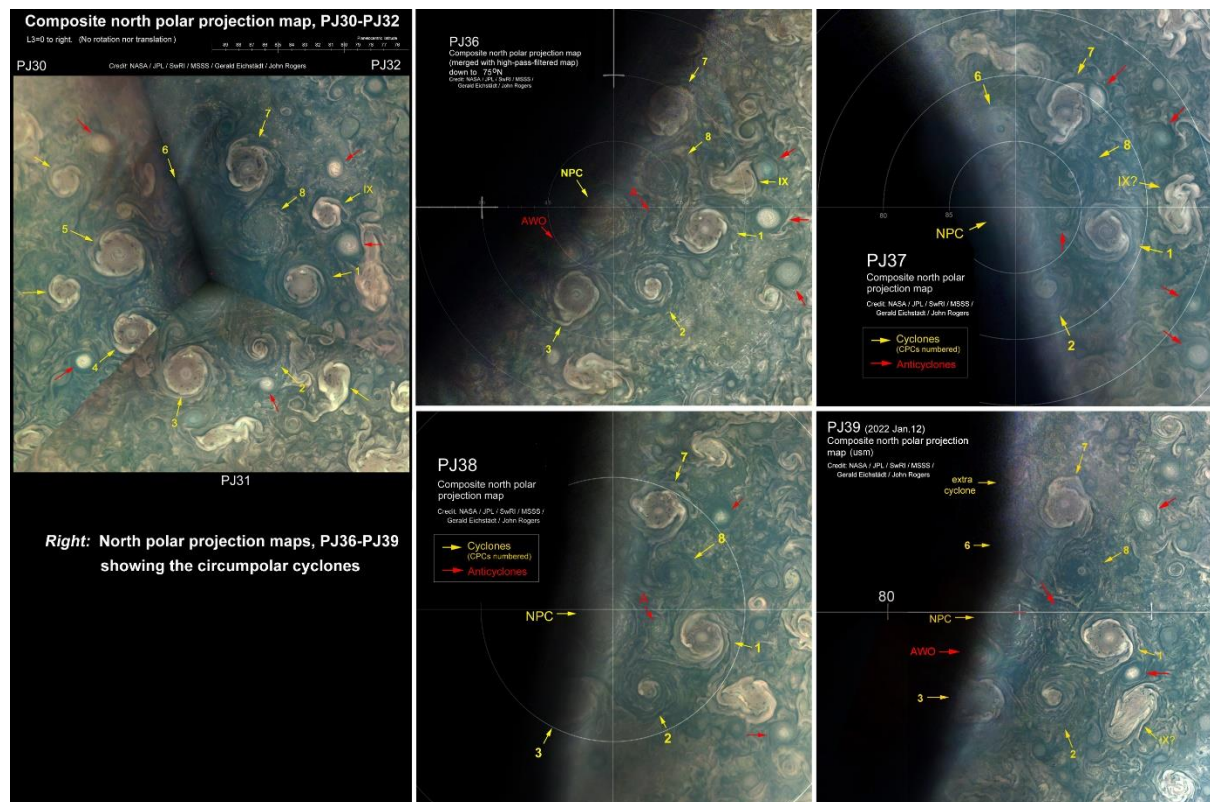
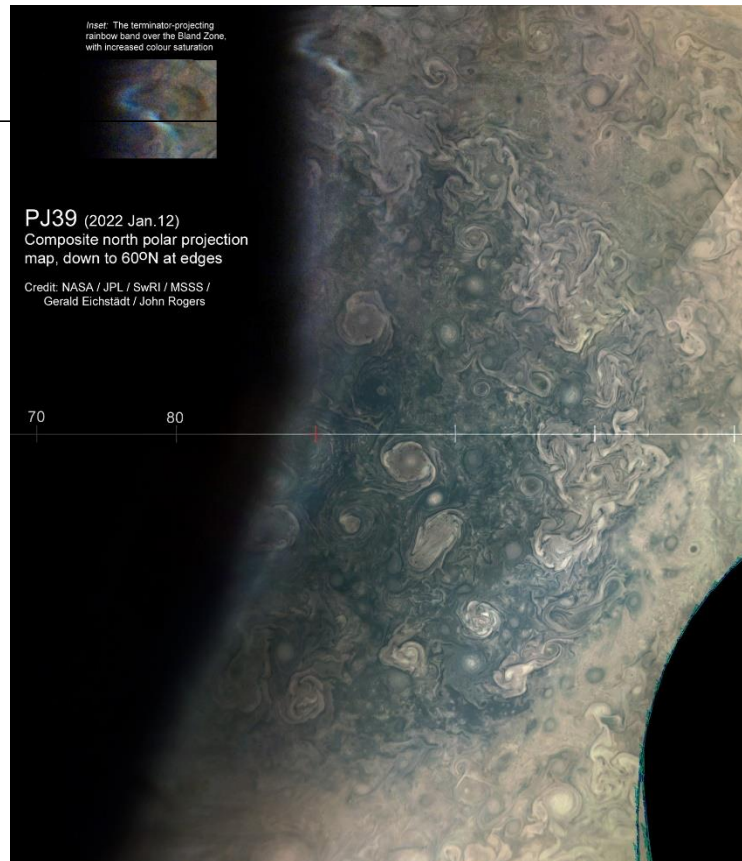
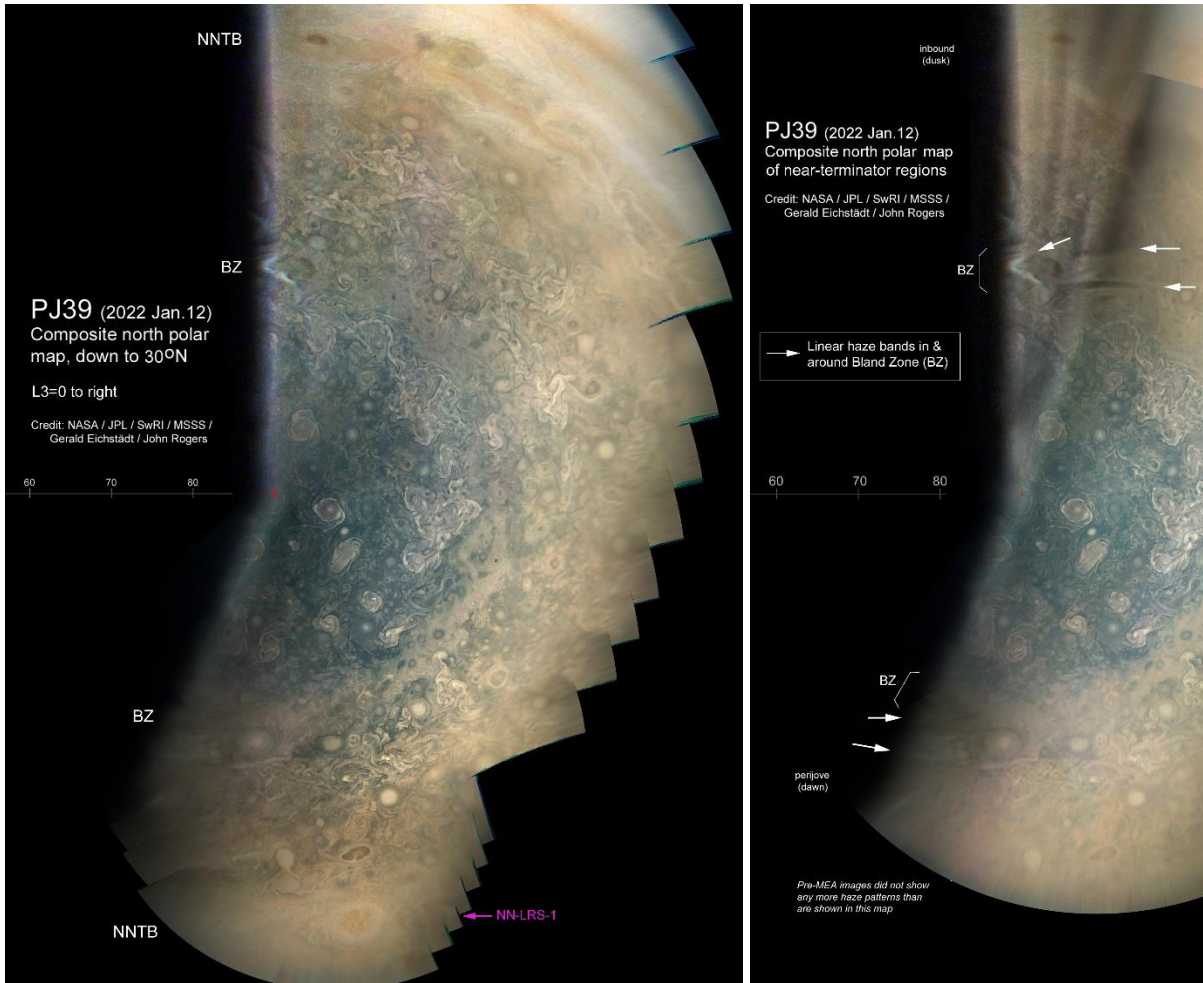


Figure 2: Composite north polar projection maps from PJ39 & previous perijoves, showing the stability of the ‘vortex crystal’ of CPCs.



(L) Figure 3: Composite north polar projection map (down to 30°N at edges), from RGB images.
(R) Figure 4: Composite north polar projection map (down to 30°N at edges), from RGB images, favouring the near-terminator regions so as to show high-level hazes. White arrows indicate linear bands in and near the Bland Zone (BZ).

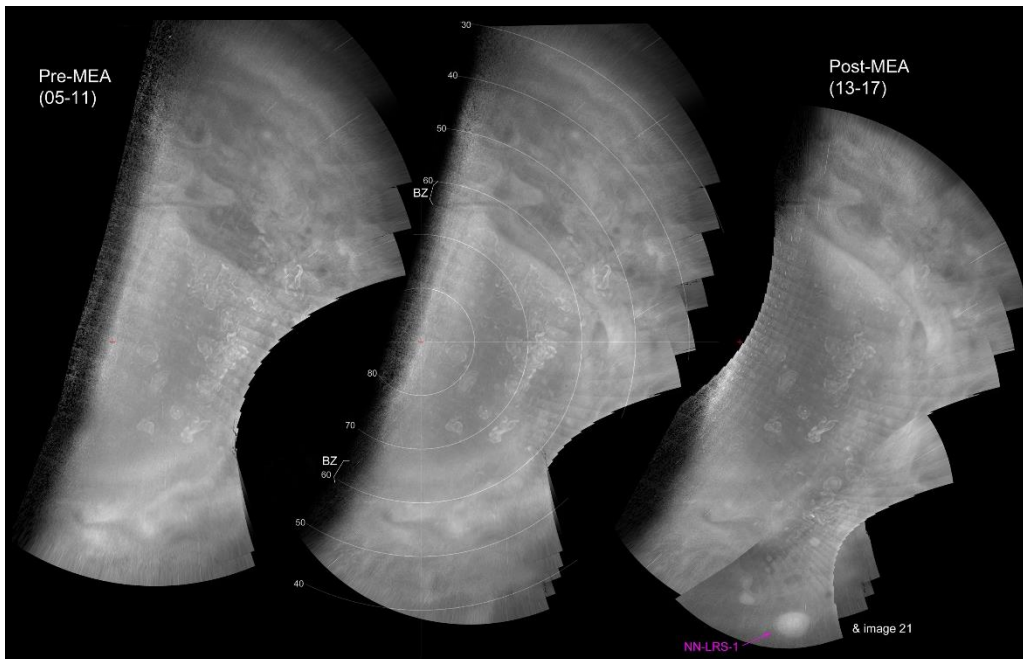


Figure 5: Composite north polar projection maps (down to 30°N at edges), from CH4 images.

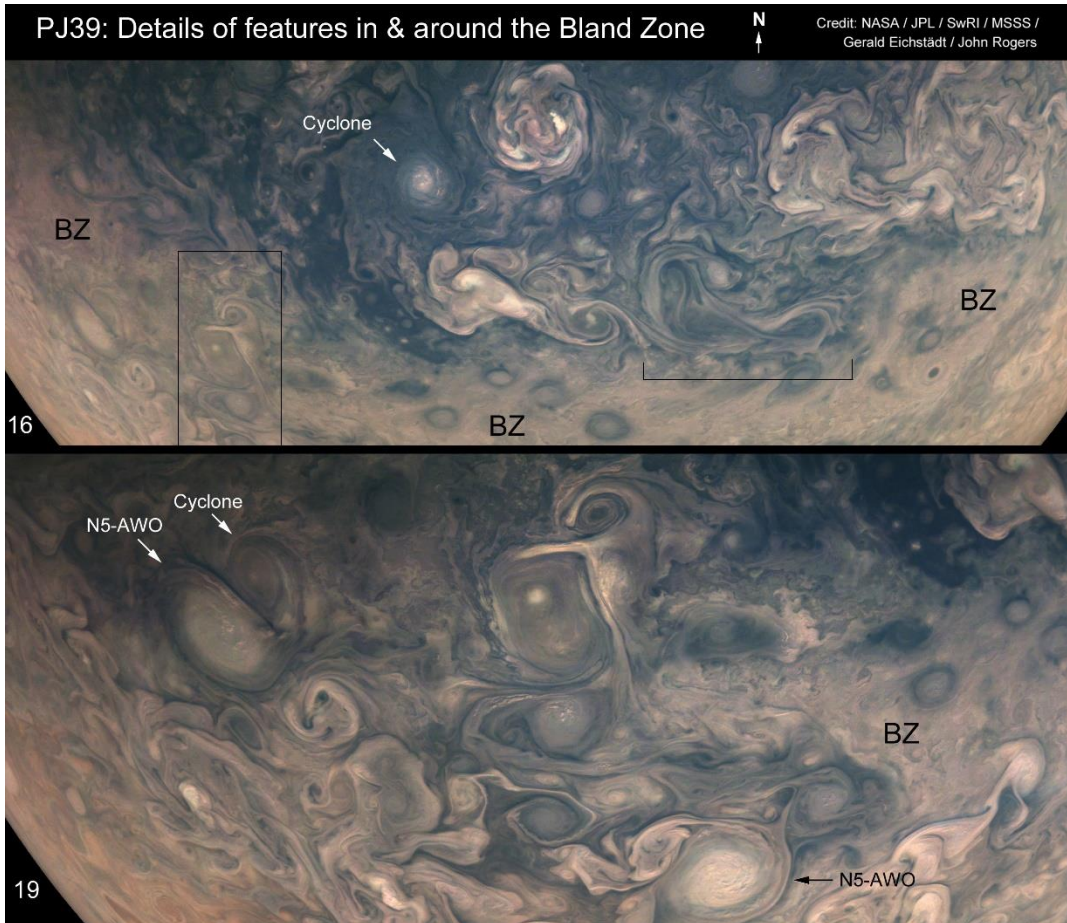


Figure 6: Various interacting vortices in and around the Bland Zone. (See text for explanation.)

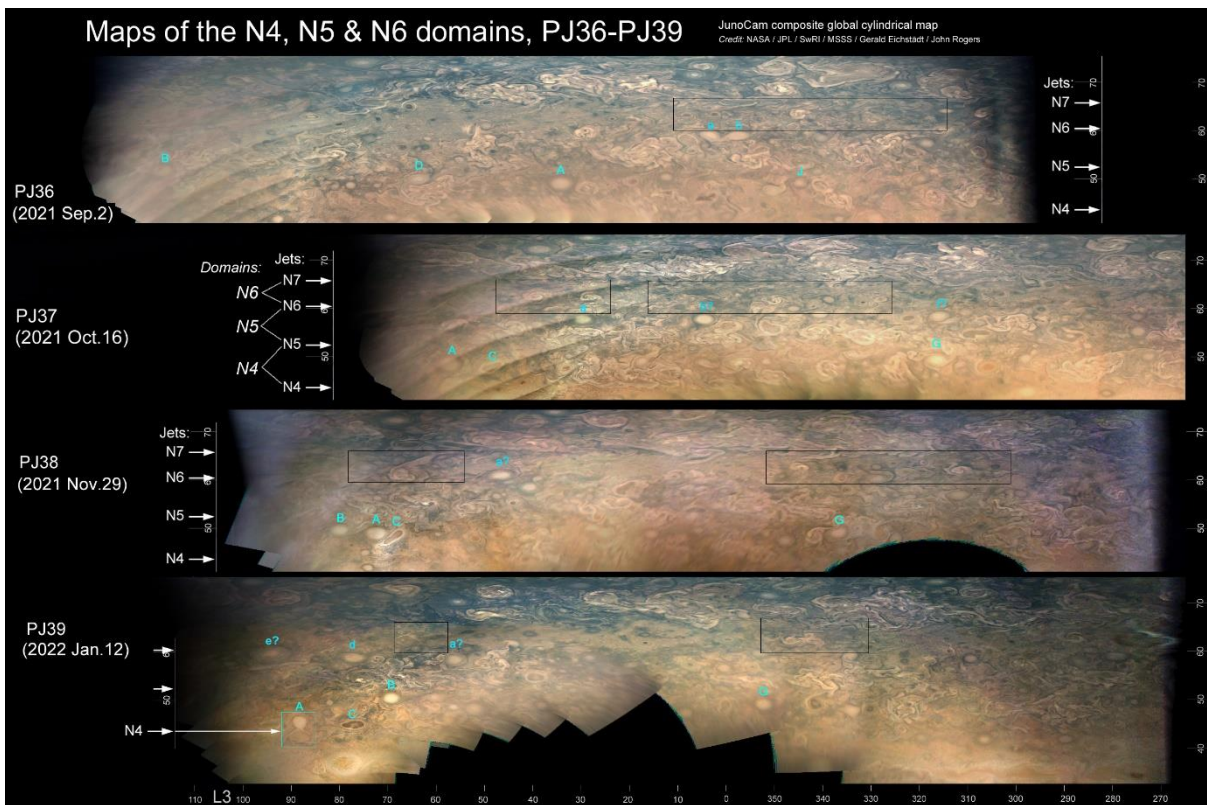


Figure 7. Set of cylindrical maps, ~40-75°N: PJ36-PJ39.

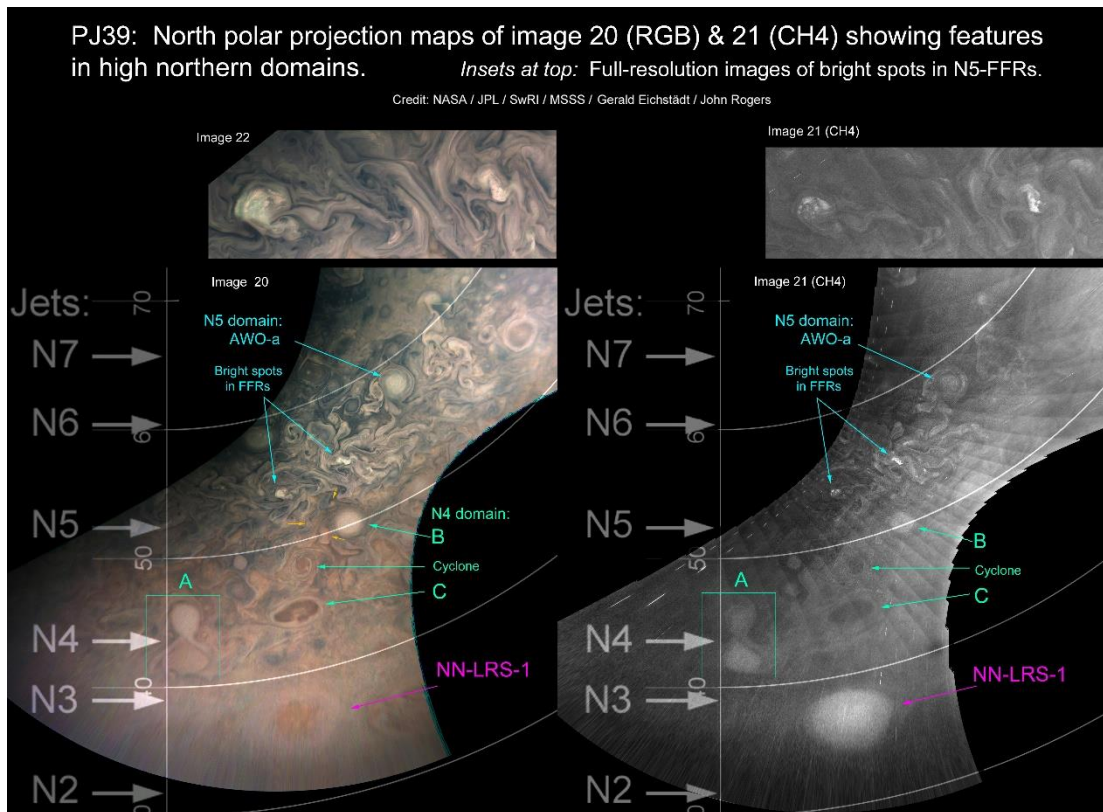


Figure 8. Hi-res polar projection maps of images 20 (RGB) & 21 (CH4), showing features in the N5 and N4 domains, and NN-LRS-1. *At top:* Details from unprojected images 22 & 21 showing how the very bright spots in FFRs are composed of popup clouds.

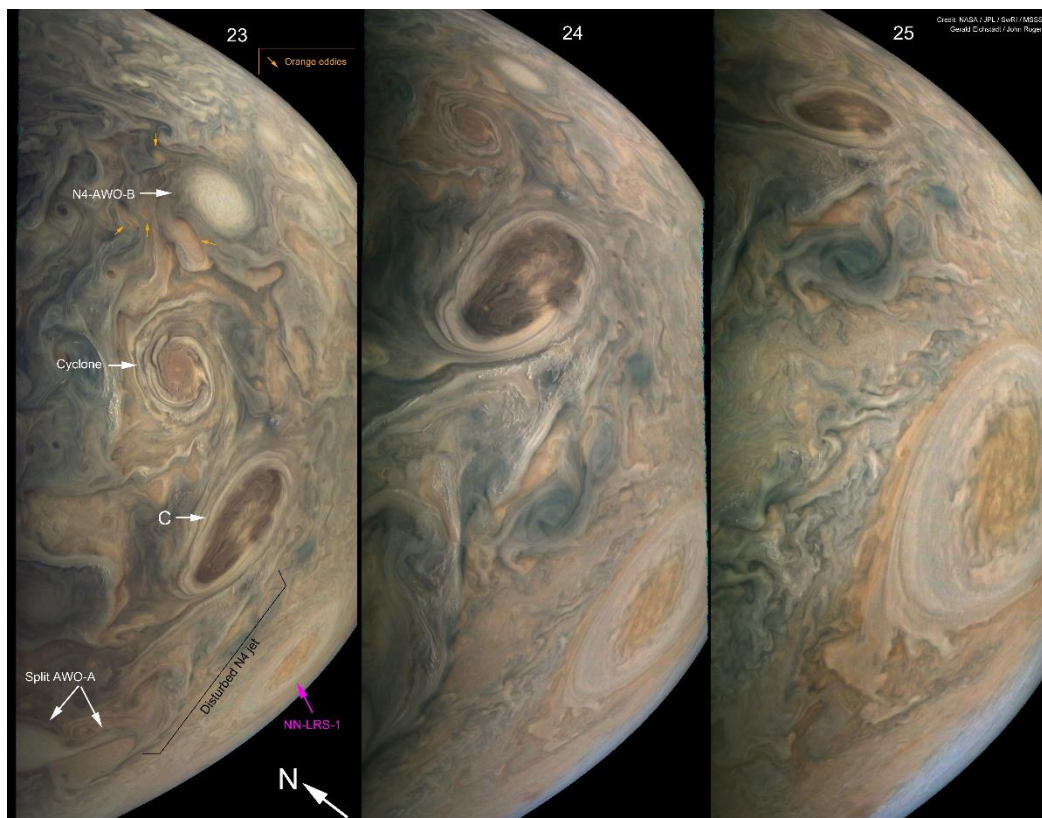


Figure 9. Full-resolution images of features in the N5 and N4 domains, and NN-LRS-1.

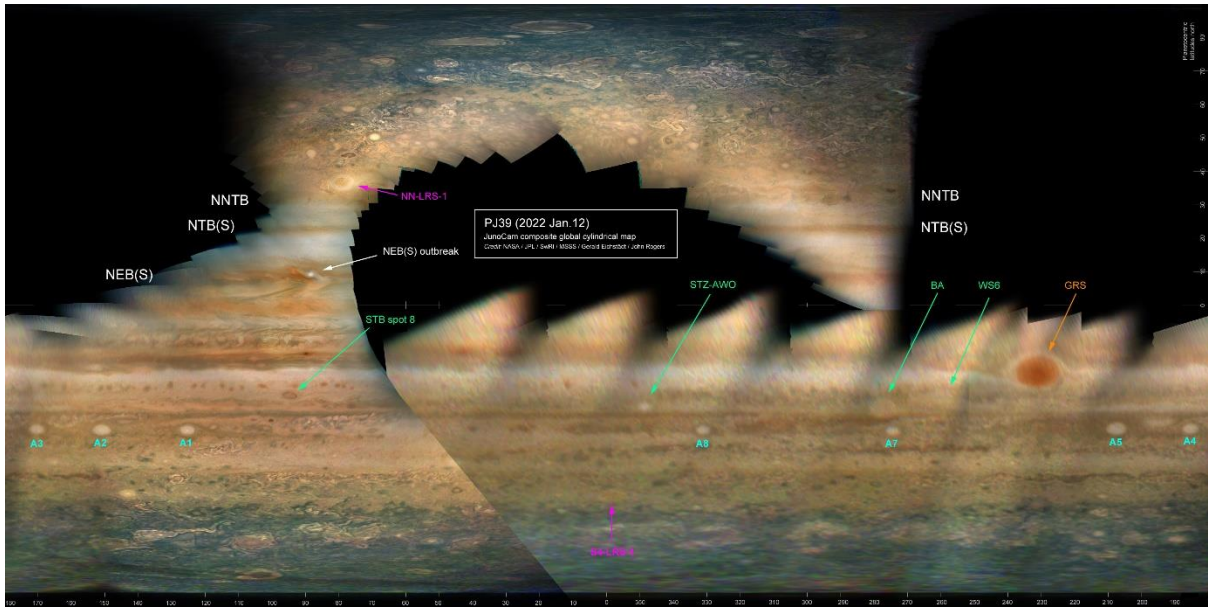


Figure 10. JunoCam PJ39 global cylindrical map.

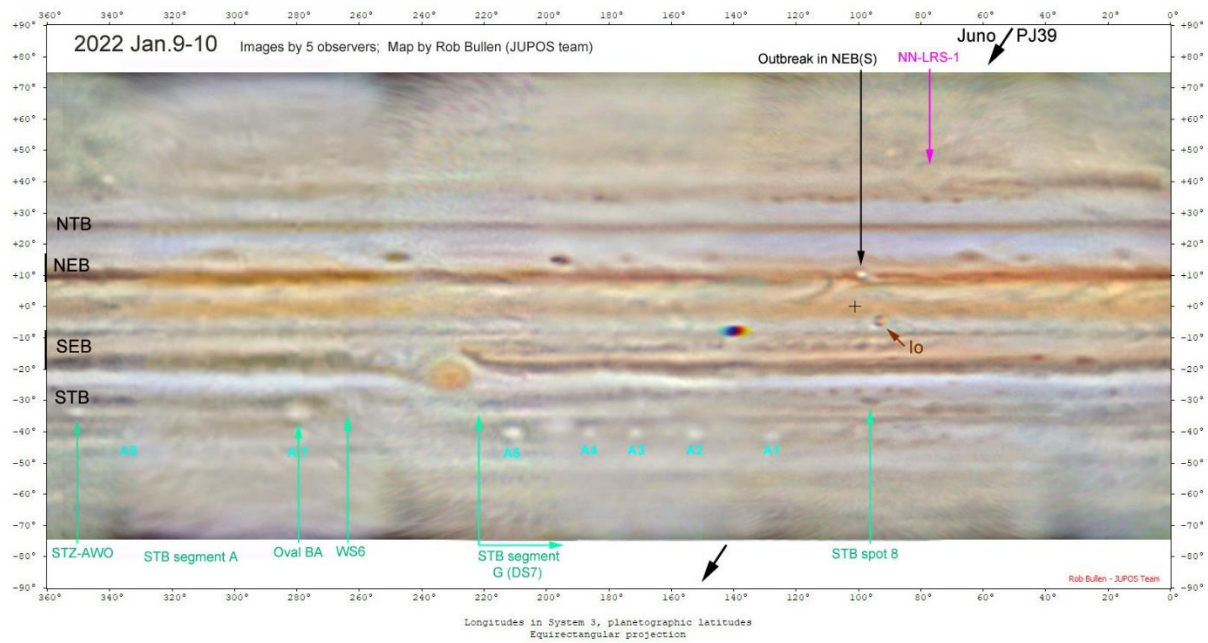


Figure 11. Ground-based cylindrical map. on Jan.9-10, just before PJ39.

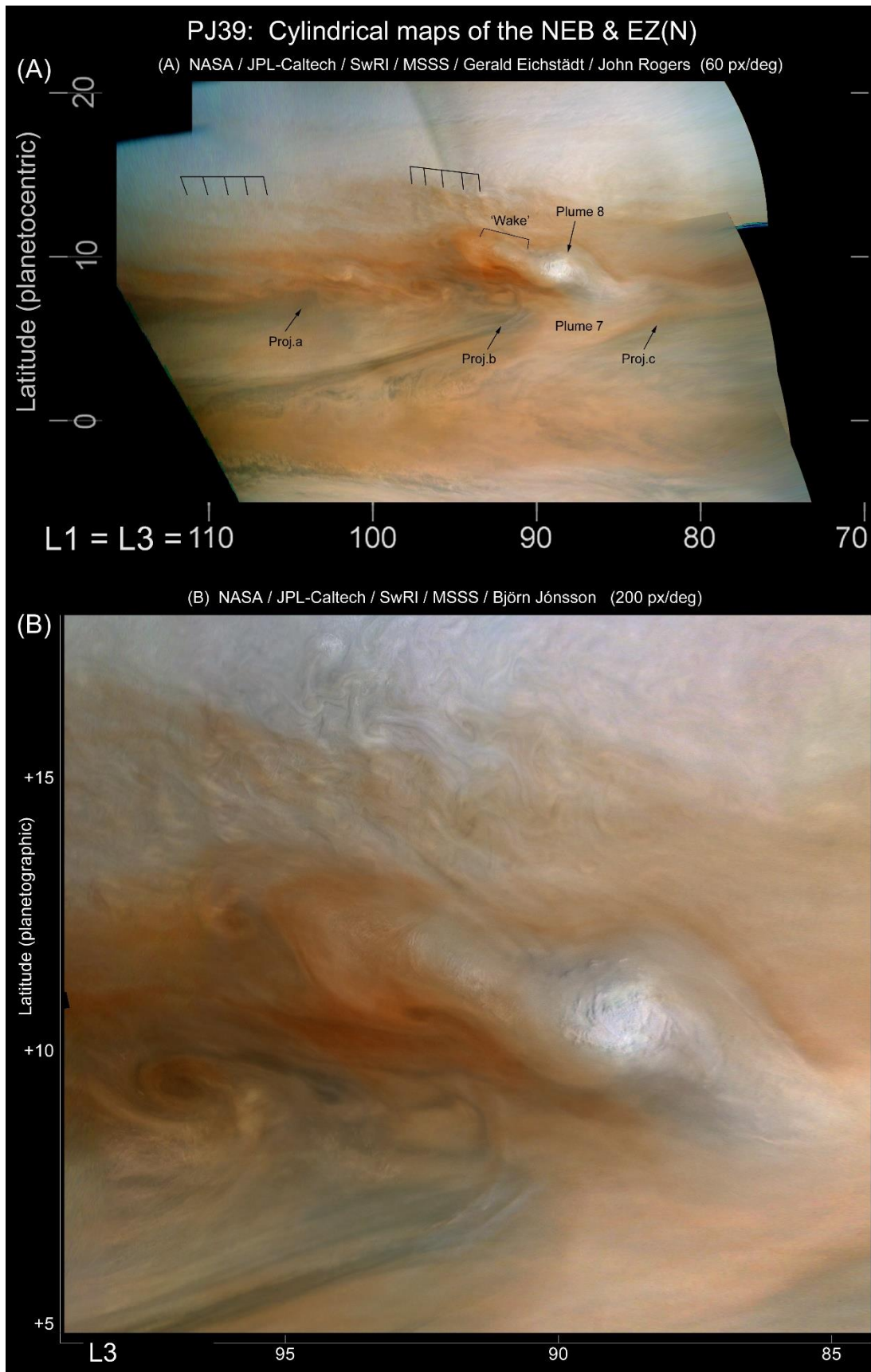


Figure 12. Hi-res maps of the NEB from the PJ39 images, with key features labelled. (A) by Gerald Eichstädt & JHR; (B) by Björn Jónsson. Colours and intensities have been adjusted.

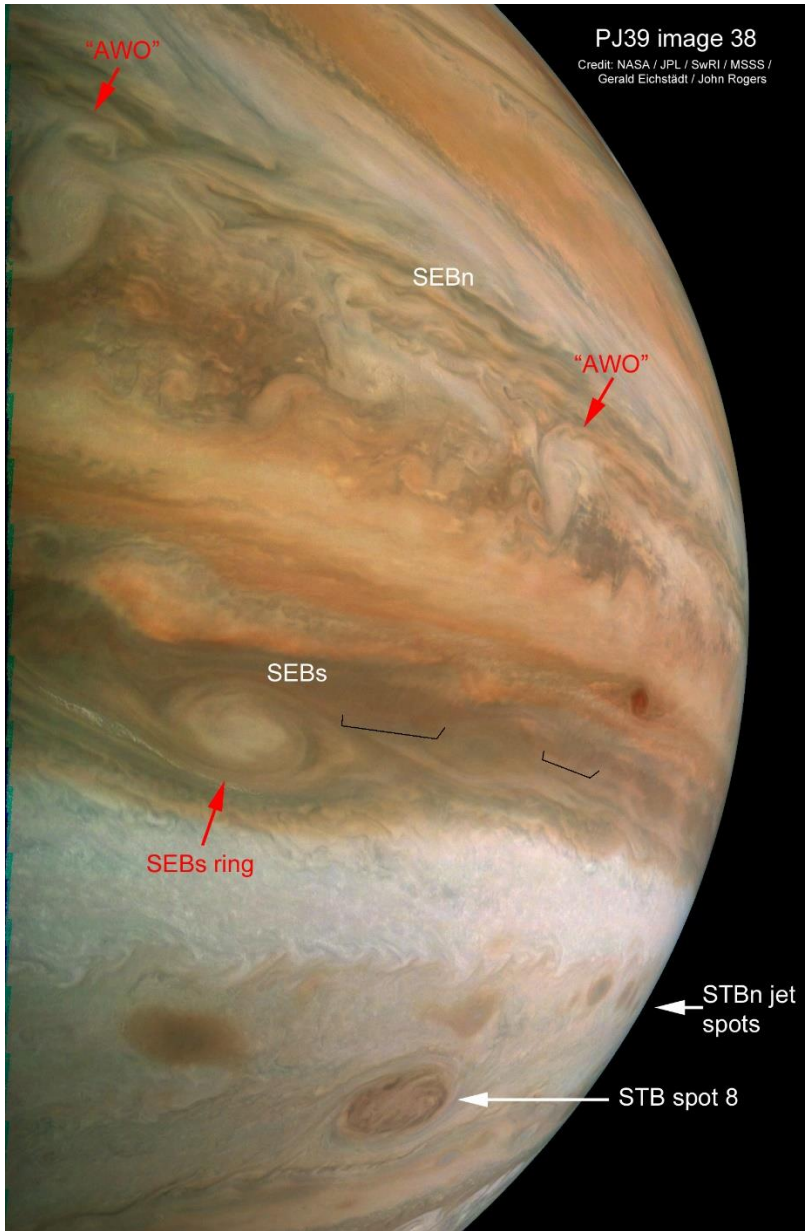


Figure 13. Original image showing the SEB, as well as STB spot 8 & STBn jet spots.

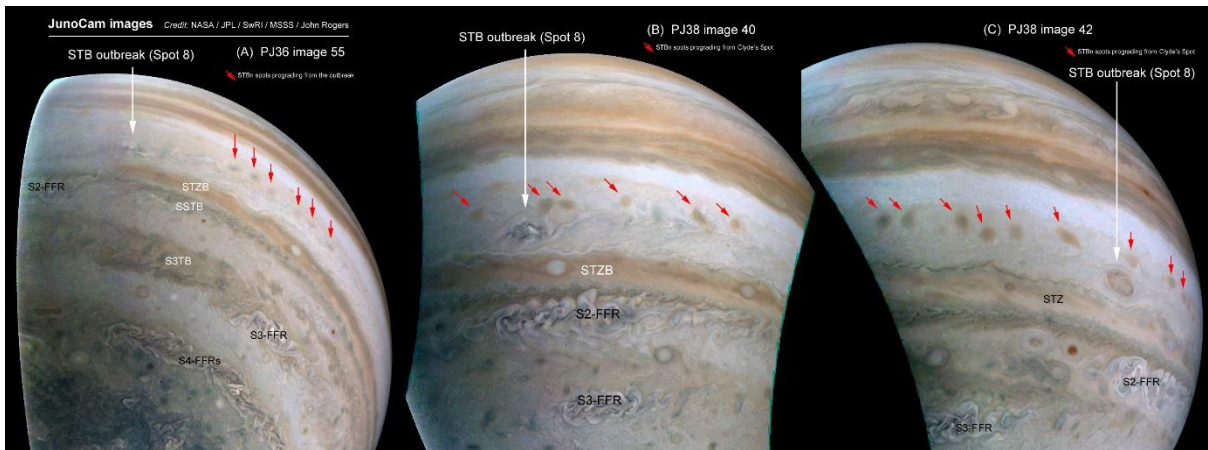
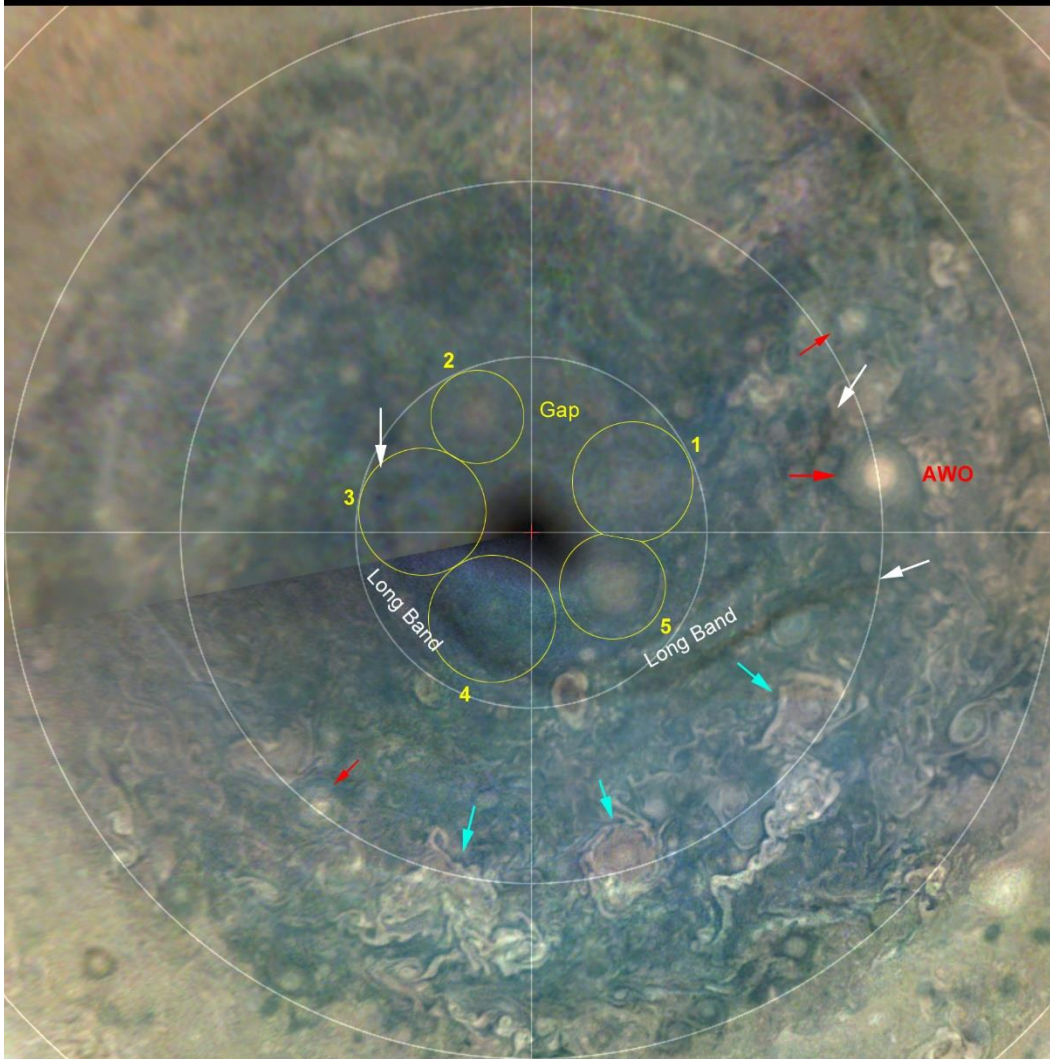


Figure 14. Original images showing STB spot 8 & STBn jet spots, PJ37-PJ39.

(A) PJ39: Composite south polar projection map, down to 60°S at edges

Credit: NASA / JPL / SwRI / MSSS / Gerald Eichstädt / John Rogers



(B) PJ38: South polar projection map

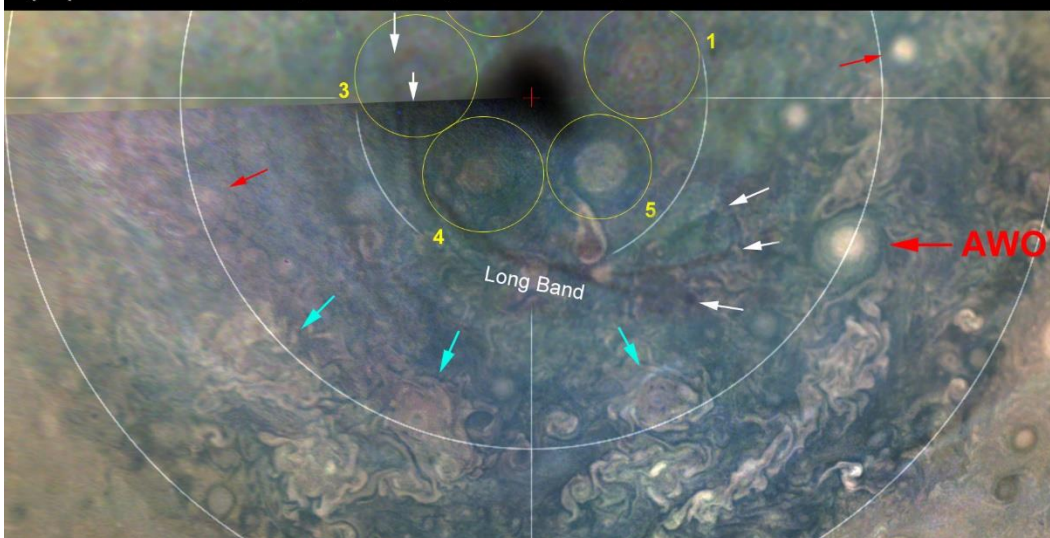


Figure 15. Composite south polar projection map of RGB images, cropped to 60°S. Below is part of our PJ38 map for comparison.

Below: Figures 16-19. Composite south polar projection maps (down to 45°S):

Fig. 16, terminators, dawn; Fig. 17, terminators, dusk; Fig. 19, methane band. See text for key.

Credit: NASA / JPL / SwRI / MSSS / Gerald Eichstädt / John Rogers

Fig. 16 (dawn)

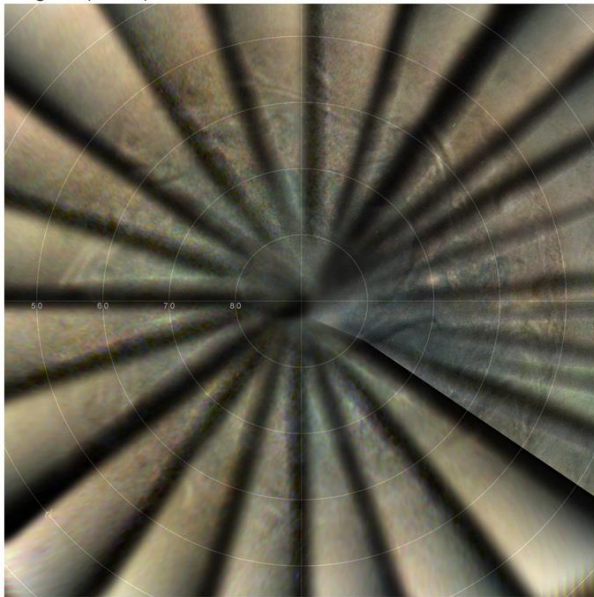
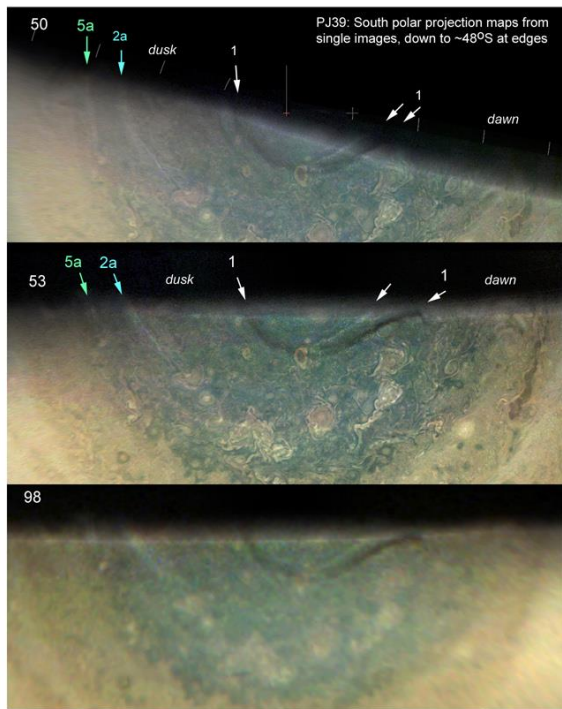
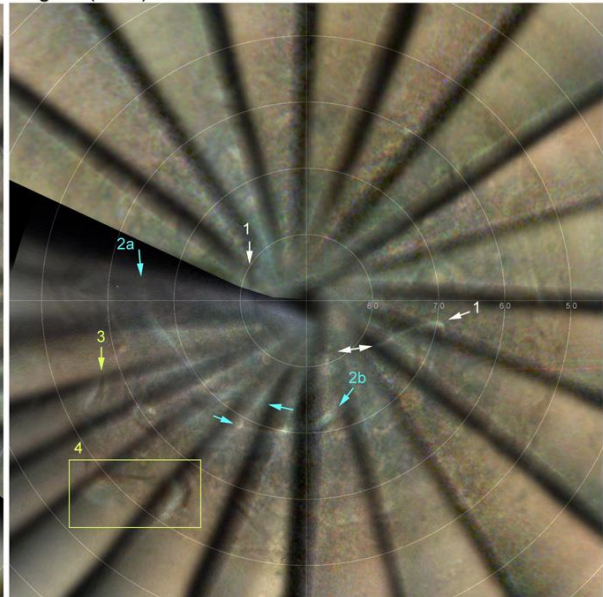


Fig. 17 (dusk)



Left: Fig. 18, 3 single images (down to 48°S).

Below: Fig. 19 (CH4).

