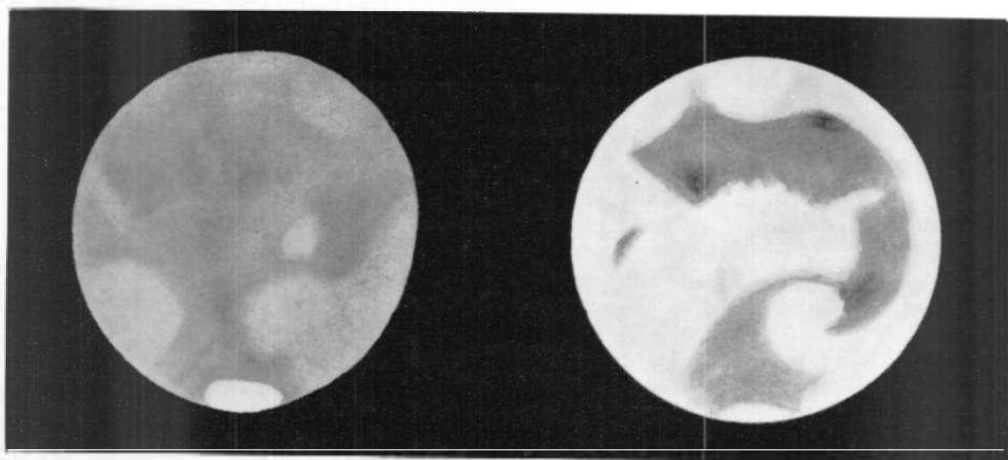


Reproduced by kind permission of the International Astronomical Union.

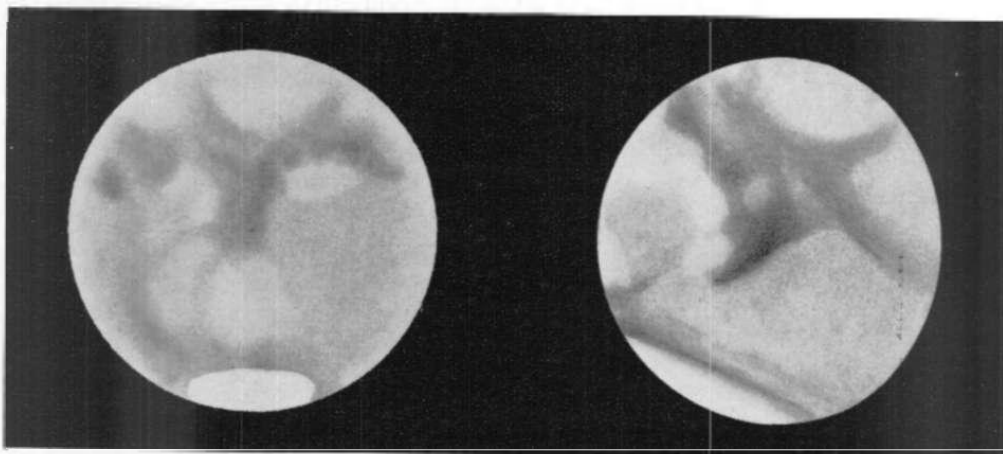
PLATE 2

MARS 1960-61



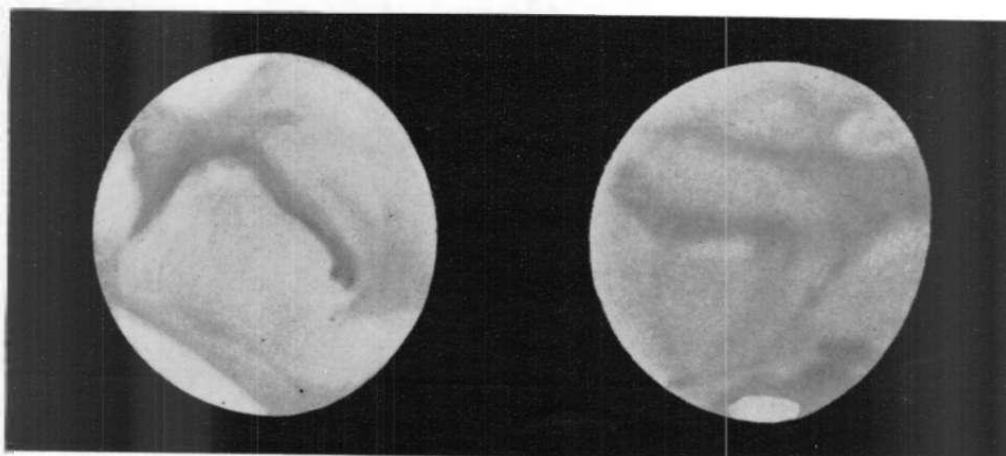
1961 Feb. 2 $\omega = 205^\circ$
M. Atchison, 8-inch O.G.

1960 Dec. 31 $\omega = 250^\circ$
A. C. Curtis, 12-inch Sme.



1960 Dec. 30 $\omega = 280^\circ$
M. Atchison, 8-inch O.G.

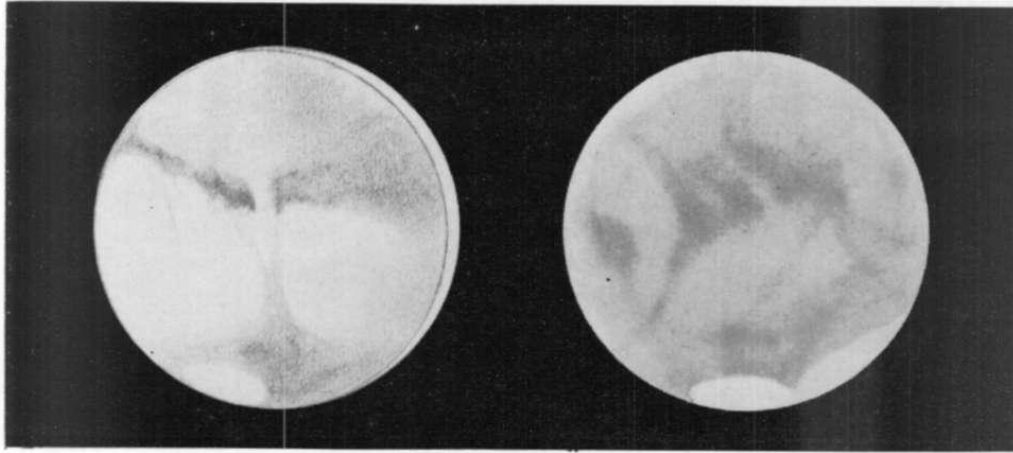
1961 Feb. 24 $\omega = 302^\circ$
R. W. Boggis, 10-inch O.G.



1961 Feb. 27 $\omega = 320^\circ$
R. W. Boggis, 10-inch O.G.

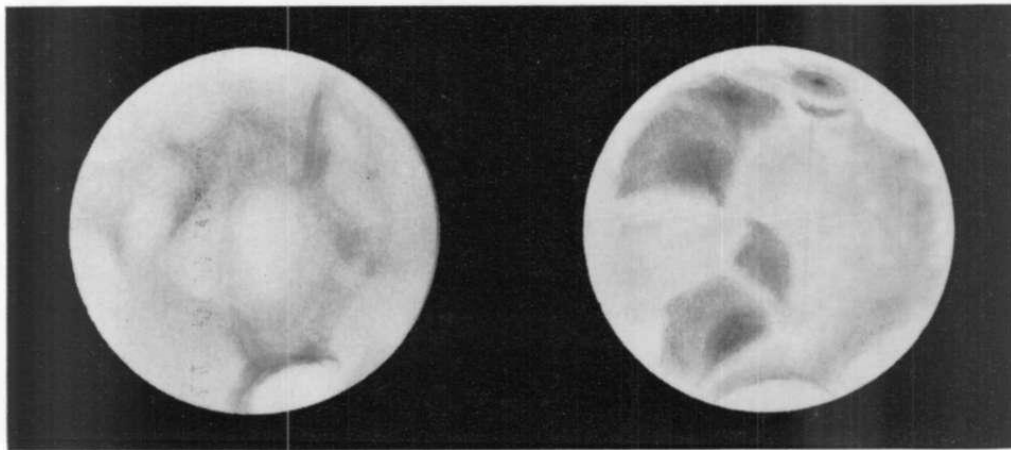
1961 Jan. 27 $\omega = 6^\circ$
M. Atchison, 6-inch O.G.

PLATE 3
MARS 1960-61



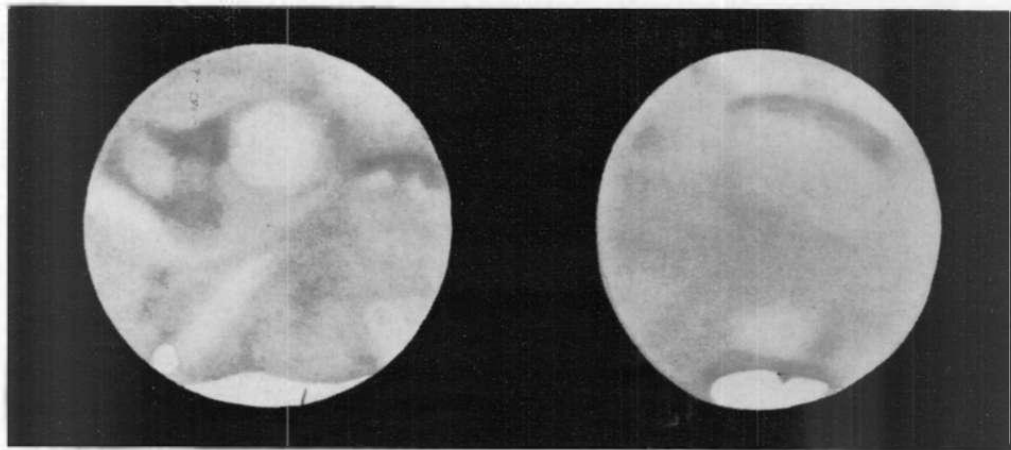
1961 Jan. 21 $\omega = 16^\circ$
J. H. Botham, 9-inch O.G.

1960 Dec. 16 $\omega = 30^\circ$
M. Atchison, 6-inch O.G.



1961 Jan. 18 $\omega = 40^\circ$
T. P. Pearce, 8-inch O.G.

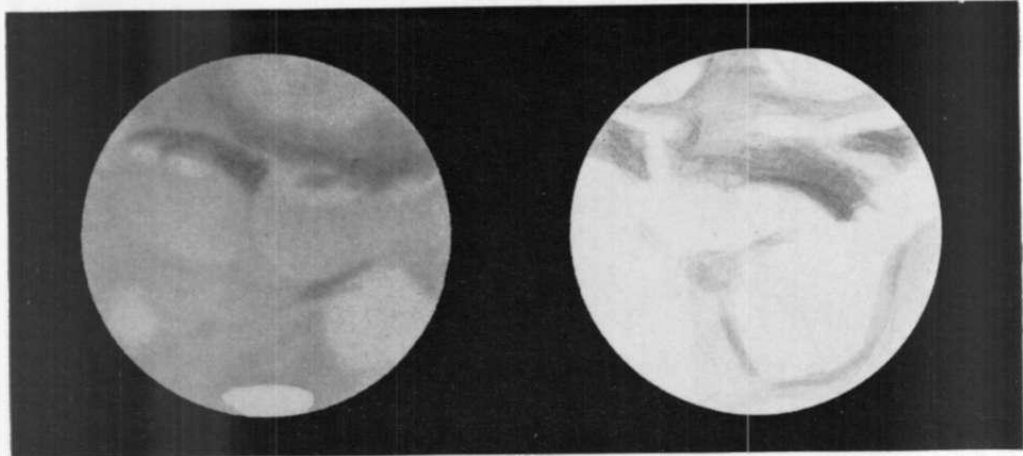
1960 Dec. 12 $\omega = 65^\circ$
A. C. Curtis, 12-inch Spec.



1961 Jan. 11 $\omega = 104^\circ$
M. Atchison, 18-inch O.G.

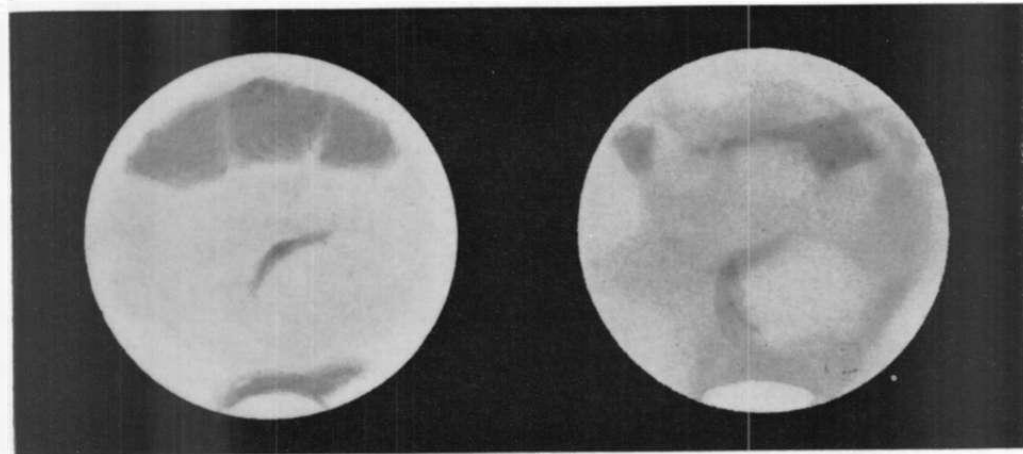
1960 Dec. 4 $\omega = 122^\circ$
M. Atchison, 6-inch O.G.

PLATE 4
MARS 1960-61



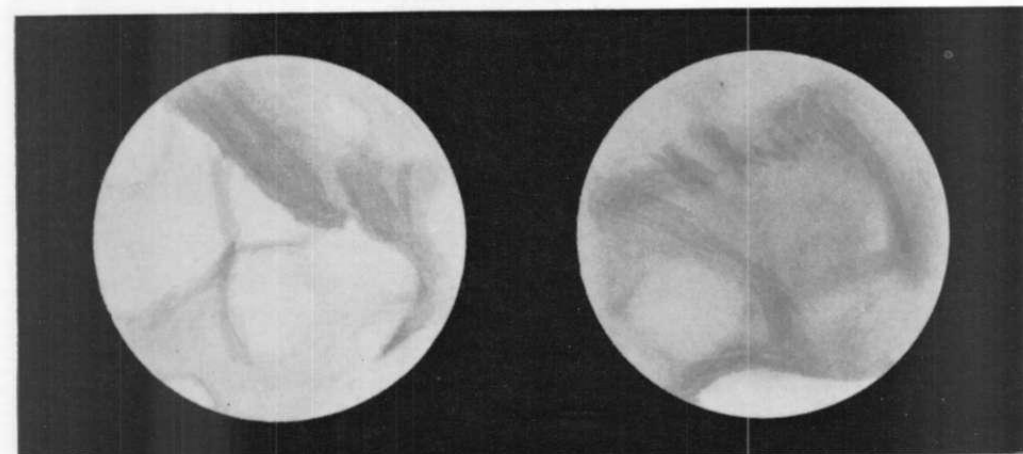
1961 Jan. 11 $\omega = 172^\circ$
M. Atchison, 8-inch O.G.

1961 Jan. 26 $\omega = 213^\circ$
H. Sykes, 12-inch Spec.



1961 Jan. 8 $\omega = 187^\circ$
A. C. Curtis, 12-inch Spec.

1961 Jan. 6 $\omega = 216^\circ$
M. Atchison, 8-inch O.G.



1961 Feb. 11 $\omega = 218^\circ$
M. Blosfelds, 8-inch Spec.

1960 Dec. 28 $\omega = 255^\circ$
M. Atchison, 18-inch O.G.